



Self Priming Centrifugal Pump

Models 13D-L70EE and 13D-L70EE S/G
13D1-L70EE and 13D1-L70EE S/G

Size 3" x 3"



18 MTC



Total Head		Capacity Of Pump In U.S. Gallons Per Minute (GPM) At Continuous Performance				
P.S.I.	Feet	75	75	75	75	75
30.3	70	75	75	75	75	75
26.0	60	153	158	158	158	158
21.7	50	178	220	233	233	233
17.3	40	180	237	280	285	285
13.0	30	183	244	292	321	328
8.7	20	185	250	297	337	362
4.3	10	185	254	305	345	385
Suction Lift		25'	20'	15'	10'	5'



PUMP SPECIFICATIONS

Size: 3" x 3" (76 mm x 76 mm) NPT - Female.
Casing: Aluminum Alloy 356-T6 w/Gray Iron 30 Cutwater Insert. Maximum Operating Pressure 55 psi (379 kPa).
Semi-Open Type, Two Vane Impeller: Ductile Iron 65-45-12. Handles 1 1/2" (38,1 mm) Diameter Spherical Solids.
Replaceable Wear Plate: Carbon Steel ASTM A36.
Removable Cover Plate: Aluminum Alloy 356-T6; 4 lbs. (1,8 kg).
Intermediate Bracket: Aluminum Alloy 356-T6.
Seal:
 (13D-L70EE, 13D-L70EE S/G) Double, Grease-Lubricated w/Spring-Loaded Grease Cup. Sintered Bronze Stationary Seal Seats. Steel Rotating Faces. Neoprene Packing Rings. Maximum Temperature of Liquid Pumped 110°F (43°C). Maximum Suction Pressure 10 psi (69 kPa).
 (13D1-L70EE, 13D1-L70EE S/G) Type 31, Mechanical, Self-Lubricated. Silicon Carbide Rotating and Stationary Faces. Fluorocarbon Elastomers (DuPont Viton® or Equivalent). Stainless Steel 18-8 Cage and Spring. Maximum Temperature of Liquid Pumped 160°F (71°C).
Seal Liner: (13D-L70EE, 13D-L70EE S/G) Copper Alloy C26000.
Shaft Sleeve: (13D1-L70EE, 13D1-L70EE S/G) Alloy Steel 4130.
Flap Valve: Buna-N w/Nylon Reinforcement; Steel and Brass.
Suction Flange: Aluminum Alloy 356-T6.
Gaskets: Cork w/Nitrile Binder (NC710).
O-Rings: Buna-N.
Hardware: Standard Plated Steel.
Roll Cage with Rubber Feet.
90° Discharge Elbow.
Strainer.

Optional Equipment: Wheel Kit w/Semi-Pneumatic Tires.

**Consult Factory for Applications Exceeding Maximum Pressure and/or Temperature Indicated.*

WARNING!
Do not use in explosive atmosphere or for pumping volatile flammable liquids.

ENGINE SPECIFICATIONS

Model: Yanmar L70EE.
Type: Single Cylinder, Four Cycle, Air Cooled, Diesel Engine.
Displacement: 18.7 Cu. In. (306 cc).
Lubrication: Forced Circulation.
Air Cleaner: Dry Type.
Fuel Tank:
 (13D/13D1-L70EE) 0.92 U.S. Gal. (3,5 liters).
 (13D/13D1-L70EE S/G) 1.45 U.S. Gal. (5,5 liters).
Full Load Operating Time:
 (13D/13D1-L70EE) 2.2 Hours.
 (13D/13D1-L70EE S/G) 3.4 Hours.
Starter:
 (13D/13D1-L70EE) Rope Rewind.
 (13D/13D1-L70EE S/G) 12 Volt Electric.
Standard Equipment: Exhaust Silencer Muffler w/Guard. 90° Exhaust Deflector. Hand Throttle and Stop Control.

YANMAR PUBLISHED PERFORMANCE:
Maximum Net Continuous B.H.P.
5.8 (4,3 kW) @ 3600 RPM



GORMAN-RUPP PUMPS

www.grpumps.com

Specifications Subject to Change Without Notice

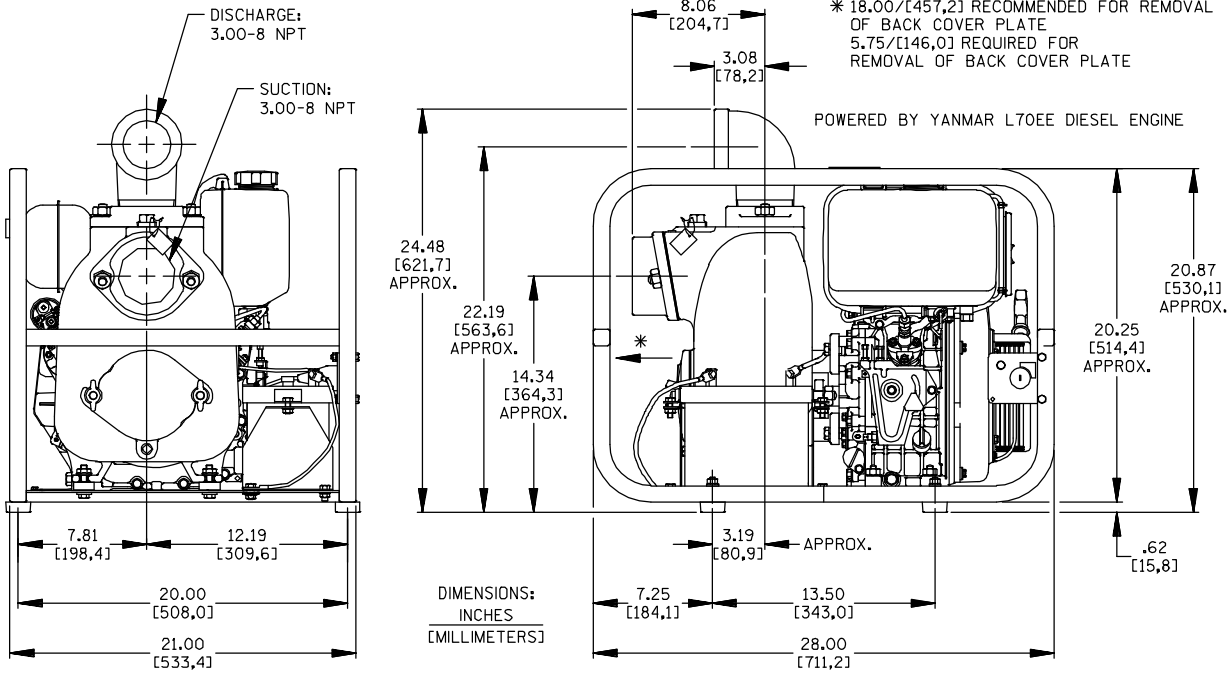
Printed in U.S.A.

Specification Data

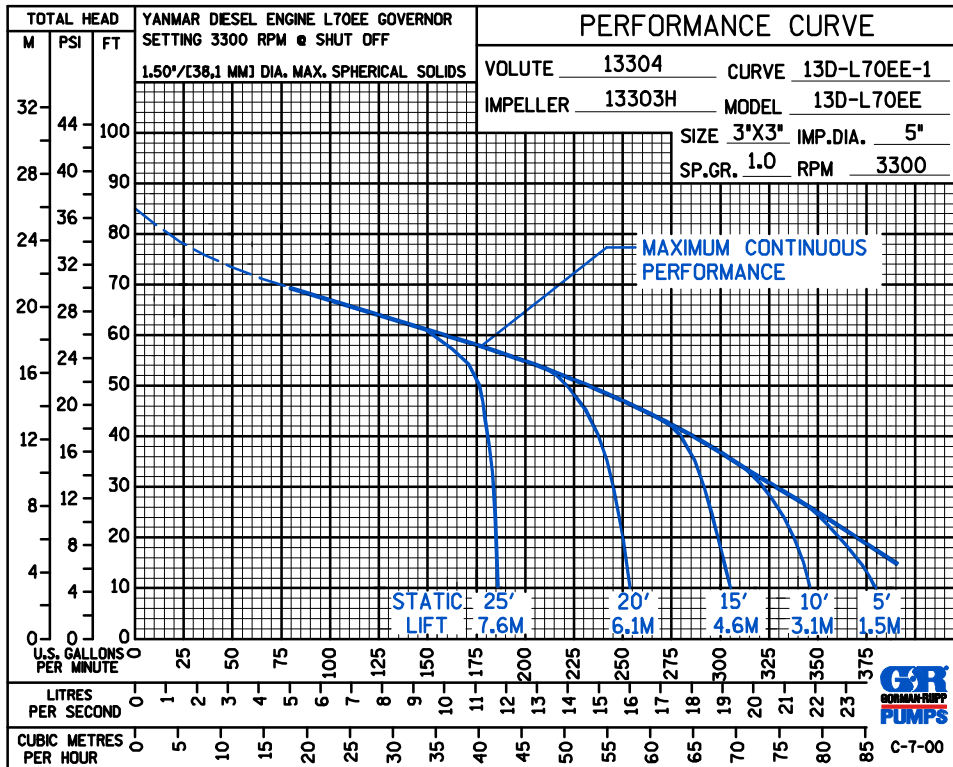
APPROXIMATE DIMENSIONS and WEIGHTS

NET WEIGHT:	13D-L70EE, 13D1-L70EE	13D-L70EE S/G, 13D1-L70EE S/G
SHIPPING WEIGHT:	119 LBS. (54 KG.)	139 LBS. (63 KG.)
EXPORT CRATE:	124 LBS. (56 KG.)	144 LBS. (65 KG.)
WHEEL KIT ADD WEIGHT:	8 CU. FT. (0,2 CU. M.)	
SHIPPING CRATE (SEPARATE):	25 LBS. (11,3 KG.); 3 CU. FT. (0,1 CU. M.)	

SECTION 45, PAGE 565



MODEL 13D-L70EE S/G SHOWN



GORMAN-RUPP PUMPS

www.grpumps.com

Specifications Subject to Change Without Notice

Printed in U.S.A.