

ACDEU



Gasoline Engine Driven

Self Priming Centrifugal Pump

Model 14D1-CH23 S/G

Size 4" x 4"

CERTIFIED PERFORMANCE


The manufacturer of this pump certifies that these pumps conform to the standards of the Contractors Pump Bureau.

22 MTC

Total Head		Capacity of Pump in U.S. Gallons per Minute (GPM) at Continuous Performance				
P.S.I.	Feet					
53.3	123	120	120	120	120	120
52.0	120	150	150	150	150	150
43.4	100	240	315	340	340	340
34.7	80	260	362	432	482	500
26.0	60	272	380	456	530	570
17.4	40	280	390	470	548	595
8.7	20	290	400	485	560	620
Suction Lift		25'	20'	15'	10'	5'



PUMP SPECIFICATIONS

Size: 4" x 4" (102 mm x 102 mm) NPT - Female.

Casing: Aluminum Alloy 356-T6 w/Gray Iron 30 Cutwater Insert. Maximum Operating Pressure 89 psi (614 kPa).*

Semi-Open Type, Two Vane Impeller: Ductile Iron 65-45-12. Handles 2" (50,8 mm) Diameter Spherical Solids.

Replaceable Wear Plate: Carbon Steel 1026.

Removable Cover Plate: Aluminum Alloy 356-T6; 5 lbs. (2,2 kg).

Shaft Sleeve: Alloy Steel 4130.

Intermediate Bracket: Aluminum Alloy 356-T6.

Seal: Type 31, Mechanical, Self Lubricated, Silicon Carbide Rotating and Stationary Faces. Fluorocarbon Elastomers (DuPont Viton® or Equivalent). Stainless Steel 304 Cage and Spring. Maximum Temperature of Liquid Pumped, 160°F (71°C).*

Flap Valve: Buna-N w/Nylon Reinforcement; Gray Iron 30.

Suction Flange: Aluminum Alloy 356-T6.

Gaskets: Cork and Buna-N.

Hardware: Standard Plated Steel.

Roll Cage with Rubber Feet.

Strainer.

90° Ductile Iron Discharge Elbow.

Optional Equipment: Battery. Wheel Kit with 4.38" x 12.75" (111 mm x 323 mm) Semi-Pneumatic Tires.

*Consult Factory for Applications Exceeding Maximum Pressure and/or Temperature Indicated.



WARNING!

Do not use in explosive atmosphere or for pumping volatile flammable liquids.

ENGINE SPECIFICATIONS

Model: Kohler CH23.

Type: Twin Cylinder, Four Cycle, Air Cooled, Overhead Valve, Gasoline Engine.

Displacement: 38 Cu. In. (624 cc).

Cylinder: Aluminum w/Cast Iron Liner.

Governor: Mechanical; Adjustable.

Lubrication: Forced Circulation.

Oil Reservoir: 2 U.S. Qts. (1,9 Liters).

Air Cleaner: Dual Element w/Precleaner.

Fuel Tank: 10 U.S. Gallons (37,9 Liters).

Full Load Operating Time: 5 Hrs.

Starter: 12 Volt Electric.

Ignition System: Electronic; Solid State.

Standard Equipment: Muffler w/Guard. Manual Choke and Throttle Control w/Top Speed Limit. Oil Fill w/Dipstick; Drain Port Each Side. "Oil Sentry™" Shut Down.

KOHLER PUBLISHED PERFORMANCE:

Maximum Continuous BHP 19 (14,2 kW) @ 3600 RPM

Maximum Dynamic BHP 23 (17,2 kW) @ 3600 RPM



THE GORMAN-RUPP COMPANY • MANSFIELD, OHIO

GORMAN-RUPP OF CANADA LIMITED • ST. THOMAS, ONTARIO, CANADA

www.grpumps.com

Specifications Subject to Change Without Notice

Printed in U.S.A.

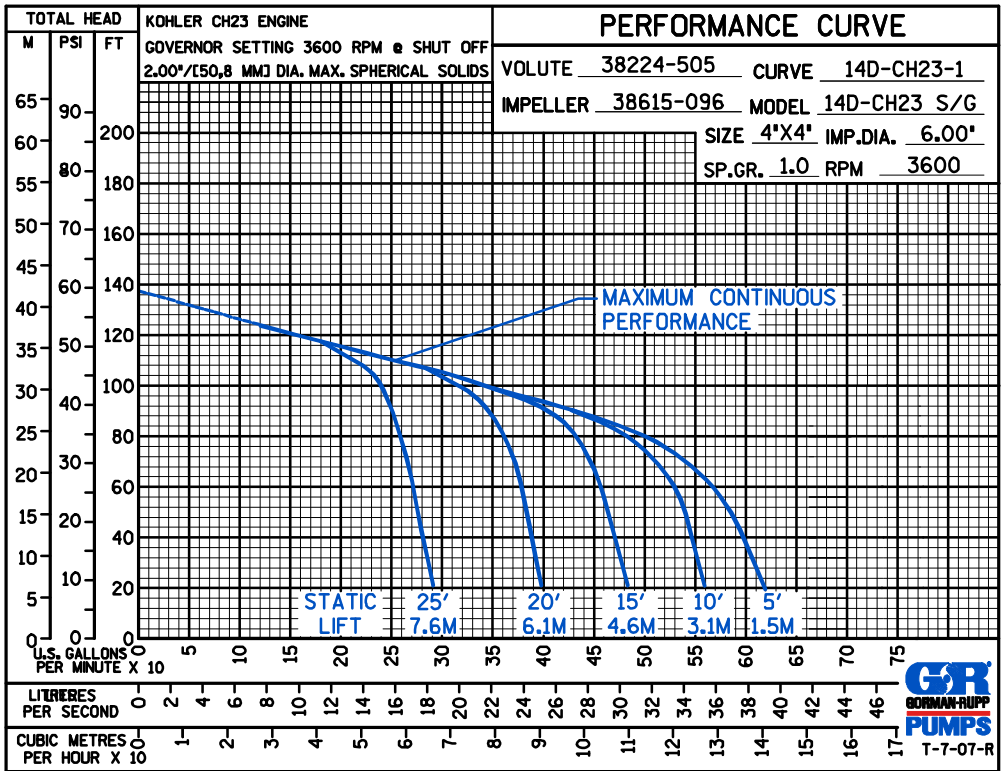
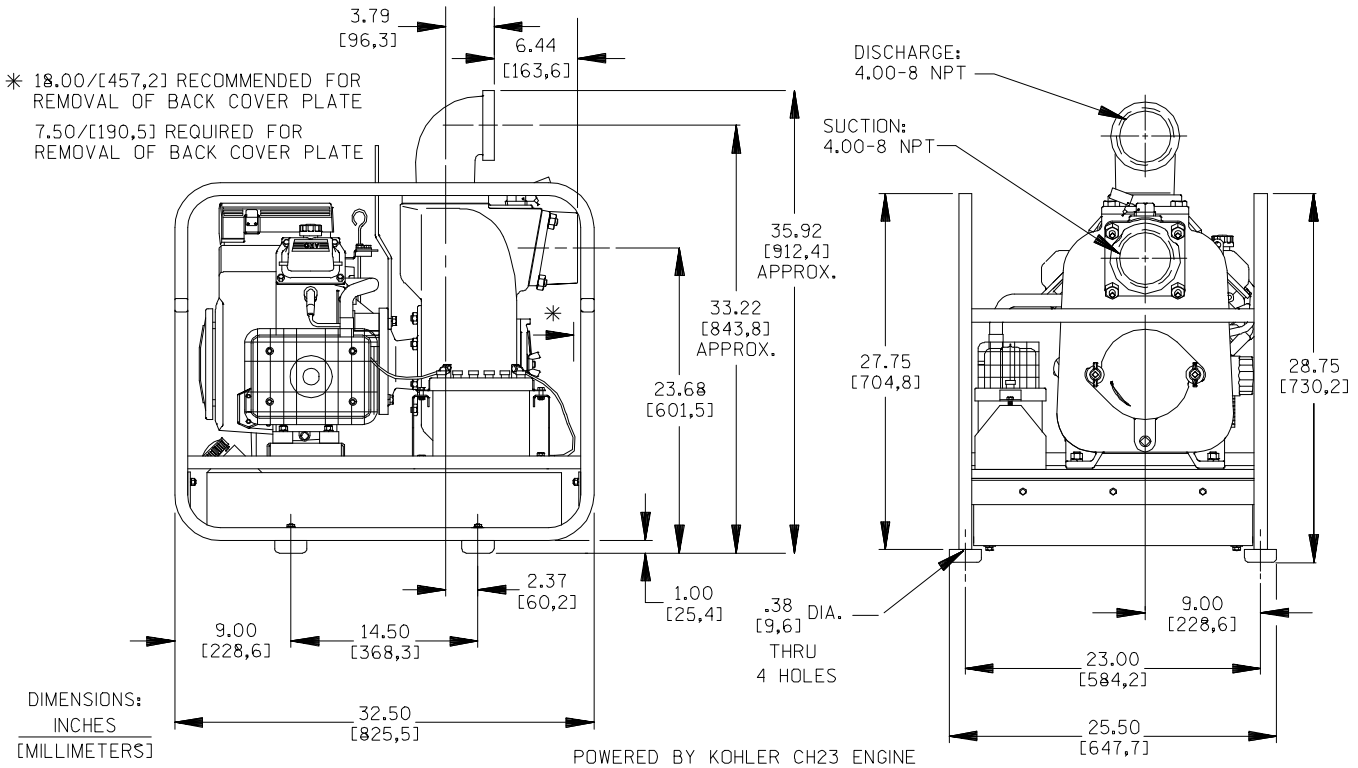
Specification Data

SECTION 45, PAGE 875

APPROXIMATE
DIMENSIONS and WEIGHTS

NET WEIGHT:
SHIPPING WEIGHT:
EXPORT CRATE:
WHEEL KIT ADD
SHIPPING CRATE (SEPARATE)

330 LBS. (150 KG.)
385 LBS. (175 KG.)
25 CU. FT. (0,7 CU. M.)
25 LBS. (11.3 KG.);
3 CU. FT. (0,1 CU. M.)



THE GORMAN-RUPP COMPANY • MANSFIELD, OHIO

GORMAN-RUPP OF CANADA LIMITED • ST. THOMAS, ONTARIO, CANADA

Specifications Subject to Change Without Notice

Printed in U.S.A.