

# Self Priming Centrifugal Pump



Models 14D2-12LD477 S/G  
and 14D52-12LD477 S/G

Size 4" x 4"



Total Head		Capacity of Pump in U.S. Gallons per Minute (GPM) at Continuous Performance				
P.S.I.	Feet					
31.2	72	52	52	52	52	52
30.3	70	90	90	90	90	90
26.0	60	220	220	220	220	220
21.7	50	280	362	380	380	380
17.3	40	296	390	460	485	485
13.0	30	300	400	480	545	550
8.7	20	300	400	490	560	590
<b>Suction Lift</b>		<b>25'</b>	<b>20'</b>	<b>15'</b>	<b>10'</b>	<b>5'</b>

## PUMP SPECIFICATIONS

**Size:** 4" x 4" (102 mm x 102 mm) NPT - Female.

**Casing:** Gray Iron 30.

Maximum Operating Pressure 51 psi (352 kPa).\*

**Semi-Open Type, Two Vane Impeller:** Ductile Iron 65-45-12.

Handles 2" (50,8 mm) Diameter Spherical Solids.

**Impeller Shaft:** Alloy Steel 4150.

**Replaceable Wear Plate:** Carbon Steel ASTM A36.

**Removable Cover Plate:** Gray Iron 30; 11 lbs. (5 kg).

**Intermediate Bracket:** Gray Iron 30.

### Seal:

**(14D2)** Double, Grease-Lubricated w/Spring-Loaded Grease Cup. Sintered Bronze Stationary Seal Seats. Steel Rotating Faces. Neoprene Packing Rings. Maximum Temperature of Liquid Pumped, 110°F (43°C). Maximum Suction Pressure 10 psi (69 kPa).\*

**(14D52)** Type 31, Mechanical, Self-Lubricated. Silicon Carbide Rotating and Stationary Faces. Fluorocarbon Elastomers (DuPont Viton® or Equivalent). Stainless Steel 18-8 Cage and Spring. Maximum Temperature of Liquid Pumped 160°F (71°C).\*

**Seal Liner (14D2):** Copper Alloy C26000.

**Shaft Sleeve (14D52):** Alloy Steel 4130.

**Flap Valve:** Buna-N w/Nylon Reinforcement; Gray Iron 30.

**Flanges:** Gray Iron 30.

**Gaskets:** Cork with Nitrile Binder (NC710).

**Hardware:** Standard Plated Steel.

### Standard Equipment:

90° Discharge Elbow. Strainer. Hoisting Bail. Skid Base.

### Optional Equipment:

Battery.  
High Speed (55 MPH/89 KM/H) Single Axle Pneumatic-Tired Wheel Kit.

\*Consult Factory for Applications Exceeding Maximum Pressure and/or Temperature Indicated.



SHOWN WITH OPTIONAL WHEEL KIT



## ENGINE SPECIFICATIONS

**Model:** Kohler KD477-2.

**EPA Tier:** Tier 4.

**Type:** Two Cylinder, Four Cycle, Air Cooled Diesel Engine.

**Displacement:** 58.2 Cu. In. (954 cc).

**Lubrication:** Full Pressure.

**Air Cleaner:** Oil Bath w/Precleaner.

**Fuel Tank:** 11 U.S. Gallons (41,6 Liters).

**Full Load Operating Time:** 15.3 Hours.

**Starter:** 12 Volt Electric.

**Standard Features:** Muffler w/Guard.

Start/Stop Keyswitch. Engine Speed Control. Low Oil Pressure Safety Shutdown Switch. Low Oil Pressure, High Engine Temperature and Low Voltage Indicator Lamps.

### KOHLER PUBLISHED PERFORMANCE:

Maximum Net Continuous B.H.P.  
14.5 (11.8 kW) @ 3600 RPM



GORMAN-RUPP PUMPS

www.grpumps.com

Specifications Subject to Change Without Notice

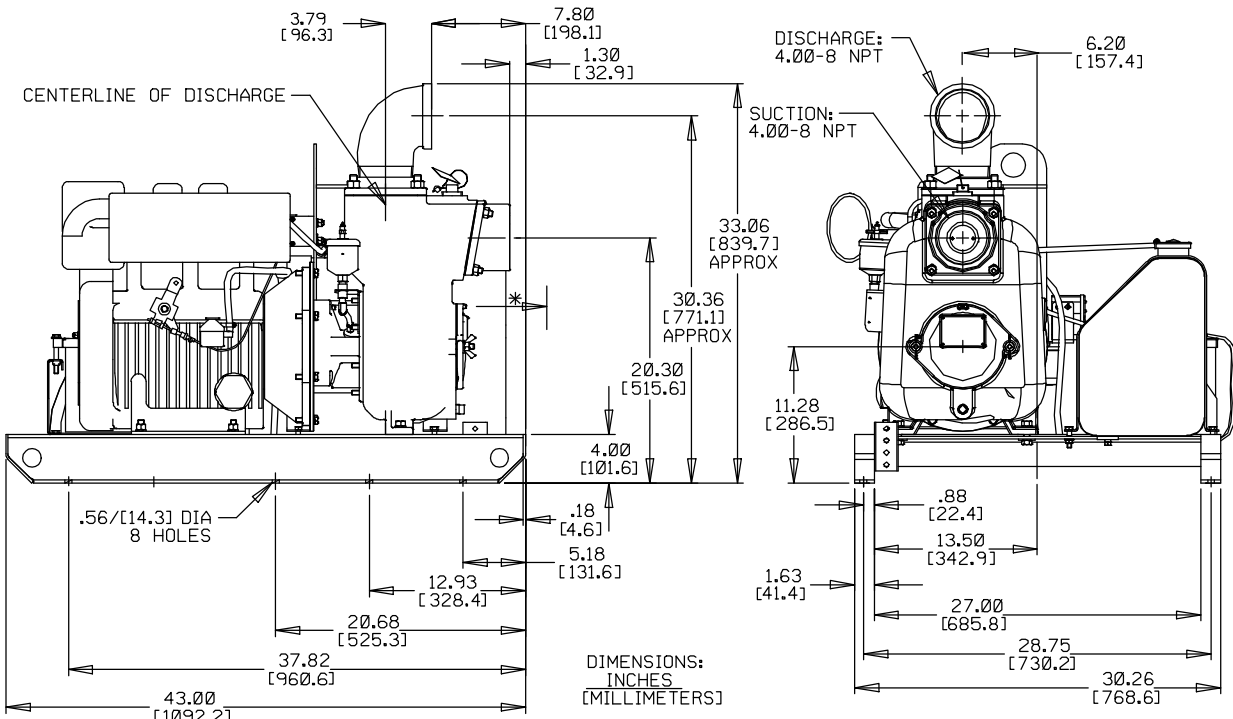
Printed in U.S.A.

**Specification Data**

**SECTION 45, PAGE 865**

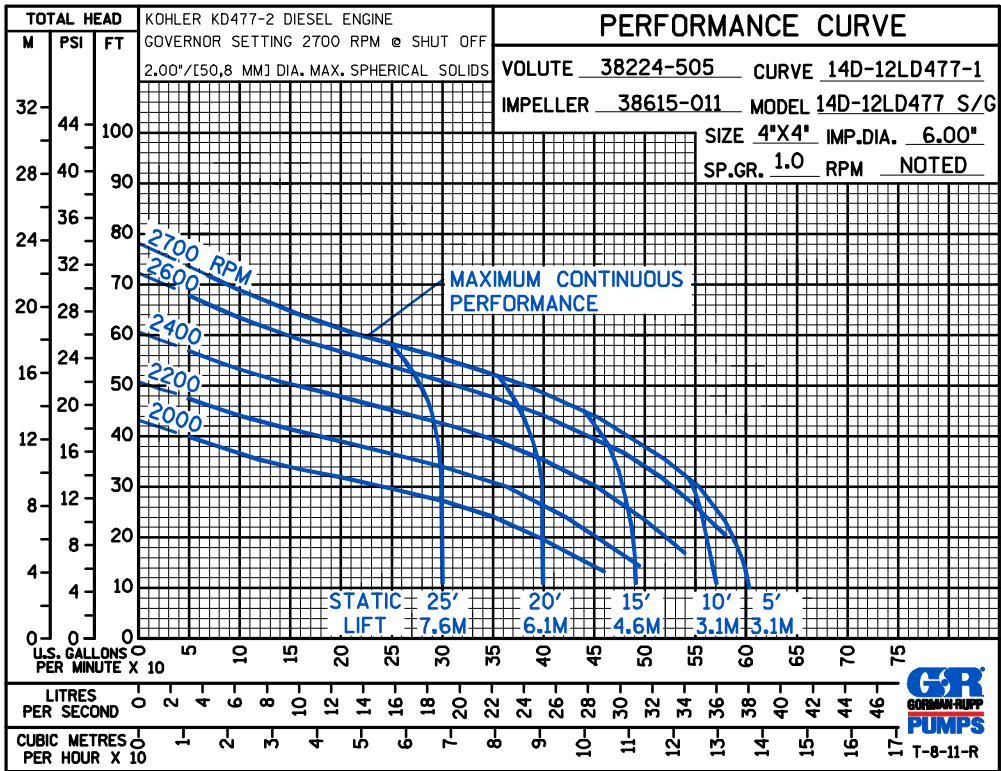
APPROXIMATE  
DIMENSIONS and  
WEIGHTS

	<b>SKID BASE</b>	<b>2-WHEEL</b>
<b>NET WEIGHT:</b>	575 LBS. [260,8 KG.]	760 LBS. [344,7 KG.]
<b>SHIPPING WEIGHTS:</b>	655 LBS. [297,1 KG.]	760 LBS. [344,7 KG.]
<b>EXPORT CRATE:</b>	59.4 CU. FT. [1,68 CU. M.]	



\* 18.00/[457.2] RECOMMENDED FOR REMOVAL OF BACK COVER PLATE.  
7.50/[190.5] REQUIRED FOR REMOVAL OF BACK COVER PLATE.

POWERED BY KOHLER KD477-2 DIESEL ENGINE



**GORMAN-RUPP PUMPS**

www.grpumps.com

Specifications Subject to Change Without Notice

Printed in U.S.A.