

ACDEU

Gasoline Engine Driven



Self Priming Centrifugal Pump

Model 14D52-GX390

Size 4" x 4"

Total Head		Capacity of Pump in U.S. Gallons per Minute (GPM) at Continuous Performance				
P.S.I.	Feet					
40.7	94	75	75	75	75	75
34.7	80	200	200	200	200	200
26.0	60	270	345	360	360	360
17.3	40	290	380	480	510	510
8.7	20	300	400	490	575	610
Suction Lift		25'	20'	15'	10'	5'



WARNING!
Do not use in explosive atmosphere or for pumping volatile flammable liquids.

PUMP SPECIFICATIONS

- Size:** 4" x 4" NPT (102 mm x 102 mm) - Female.
- Casing:** Gray Iron No. 30.
Maximum Operating Pressure 66 psi (455 kPa).*
- Semi-Open, Two Vane Impeller:** Ductile Iron No. 65-45-12.
Handles 2" (50,8 mm) Diameter Spherical Solids.
- Removable Cover Plate:** Gray Iron No. 30; 12 lbs. (5,5 kg).
- Replaceable Wear Plate:** Carbon Steel C1015
- Seal:** Type 31, Mechanical, Self-Lubricated. Silicon Carbide Rotating and Stationary Faces. Fluorocarbon Elastomers (DuPont Viton® or Equivalent). Stainless Steel No. 304 Cage and Spring. Maximum Temperature of Liquid Pumped, 160°F (71°C).*
- Flap Valve:** Buna-N^w/Nylon Reinforcement; Gray Iron No. 30.
- Suction Flange:** Gray Iron No. 30.
- Gaskets:** Cork.
- Hardware:** Standard Plated Steel.
- Standard Equipment:** Roll Cage^w/Rubber Feet.
90° Ductile Iron Discharge Elbow. Strainer.
- Optional Equipment:** Two Wheel Truck Assembly with 10.00" x 2.75" (254 mm x 70 mm) Semi-Pneumatic Tires.

**Consult Factory for Applications Exceeding Maximum Pressure and/or Temperature Indicated.*

ENGINE SPECIFICATIONS

- Model:** Honda GX390.
- Type:** Single Cylinder, Air Cooled, Overhead Valve, Gasoline Engine.
- Displacement:** 23.7 Cu. In. (388 cc).
- Cylinder:** Aluminum Alloy.
- Governor:** Mechanical.
- Air Cleaner:** Dual Element.
- Oil Reservoir:** 1.2 U.S. Qt. (1,1 liter).
- Fuel Tank:** 6.9 U.S. Qts. (6,5 liter).
- Full Load Operating Time:** 1.2 Hrs.
- Starter:** Recoil.
- Ignition System:** Transistorized Magneto.
- Standard Equipment:** Muffler^w/Guard. Rotary Stop Switch. Manual Throttle Control^w/Top Speed Limit. Manual Choke and Fuel Valve. Oil Alert™ Shut Down. Fill/Drain Ports Each Side^w/Dipstick One Side Only. Spark Plug Cover.

HONDA PUBLISHED PERFORMANCE:
Maximum Continuous 11.1 BHP (8,3 kW) @ 3600 RPM



THE GORMAN-RUPP COMPANY • MANSFIELD, OHIO

GORMAN-RUPP OF CANADA LIMITED • ST. THOMAS, ONTARIO, CANADA

www.grpumps.com

Specifications Subject to Change Without Notice

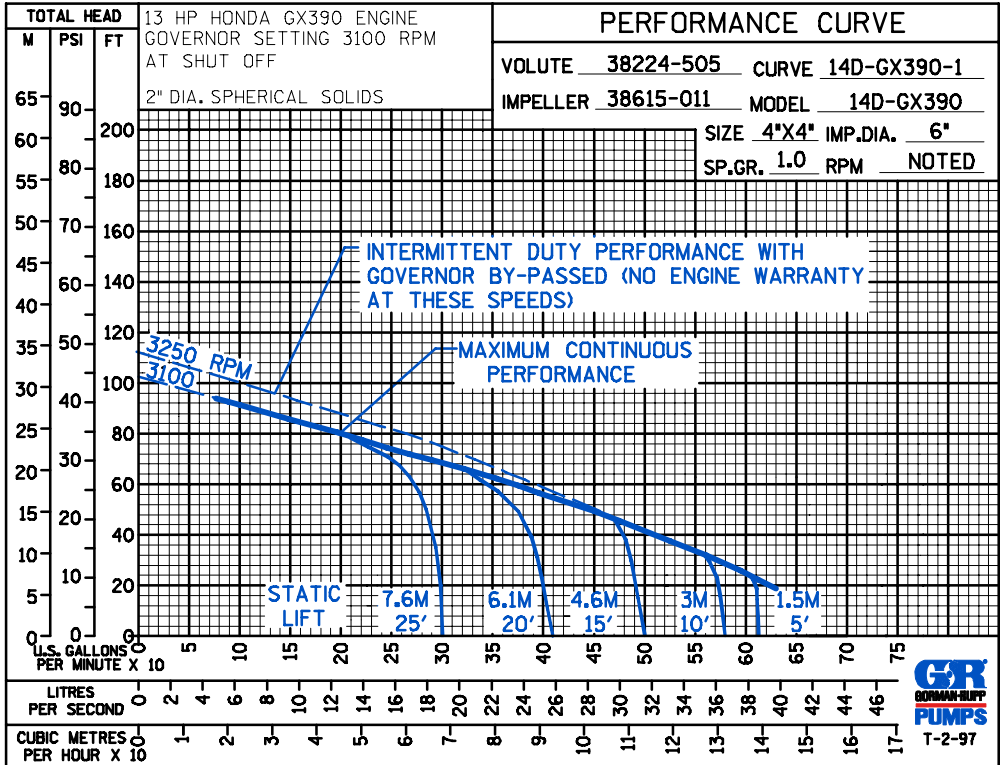
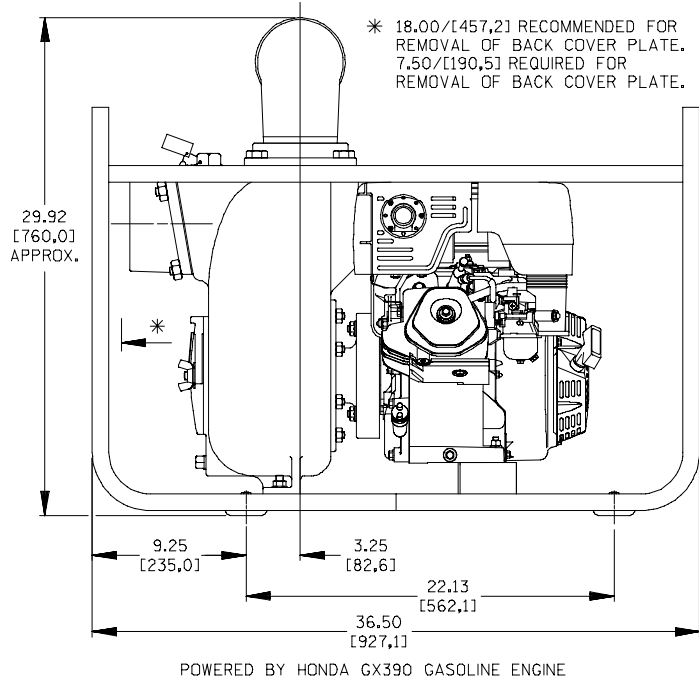
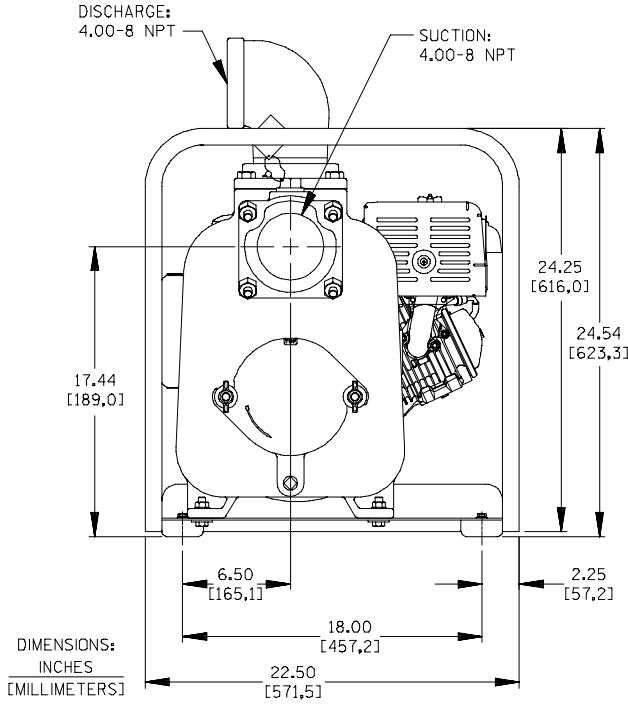
Printed in U.S.A.

Specification Data

SECTION 45, PAGE 840

APPROXIMATE
DIMENSIONS and WEIGHTS

NET WEIGHT: 319 LBS. (145 KG.)
SHIPPING WEIGHT: 369 LBS. (167 KG.)
EXPORT CRATE SIZE: 21.9 CU. FT. (0.6 CU. M.)
WHEEL KIT ADD 25 LBS. (11.3 KG.); SHIPPING CRATE (SEPARATE) 3 CU. FT. (0.1 CU. M.)



THE GORMAN-RUPP COMPANY • MANSFIELD, OHIO

GORMAN-RUPP OF CANADA LIMITED • ST. THOMAS, ONTARIO, CANADA

Specifications Subject to Change Without Notice

Printed in U.S.A.