

DS

Basic Pump

Self Priming Centrifugal Pump



Model T10A3S-B

Size 10" x 10"

VARIOUS PATENTS APPLY



PUMP SPECIFICATIONS

Size: 10" x 10" (254 mm x 254 mm) Flanged.**Casing:** Gray Iron No. 30.

Maximum Operating Pressure 99 psi (683 kPa).*

Semi-Open Type, Two Vane Impeller: Ductile Iron No. 65-45-12.

Handles 3" (76,2 mm) Diameter Spherical Solids.

Impeller Shaft: Stainless Steel No. 17-4 PH.**Shaft Sleeve:** Alloy Steel No. 4130.**Replaceable Front Wear Plate:** Ductile Iron 80-55-06.**Replaceable Rear Wear Plate:** Carbon Steel 1026.**Removable Clean-out Cover Plate:** Gray Iron No. 30; 9 lbs. (4 kg).**Flap Valve:** Neoprene w/Steel Reinforcing.**Seal Plate:** Gray Iron No. 30.**Bearing Housing:** Gray Iron No. 30.**Radial and Thrust Bearings:** Open Double Row Ball.**Bearing and Seal Cavity Lubrication:** SAE No. 30 Non-Detergent Oil.**Suction Flange:** 125# Gray Iron No. 30.**Suction Head:** Gray Iron No. 30.**Gaskets:** Buna-N, PTFE, Cork, and Rubber.**O-Rings:** Buna-N.**Hardware:** Standard Plated Steel.**Brass Pressure Relief Valve.****Bearing and Seal Cavity Oil Level Sight Gauges.****Optional Equipment:** Metal Bellows Seal. Automatic Air

Release Valve. High Pump Temperature Shutdown Kit.

120V/240V Casing Heater. Continuous Vane Impeller.

Self-Cleaning Wear Plate.

Gray Iron No. 30 Spool Flanges:

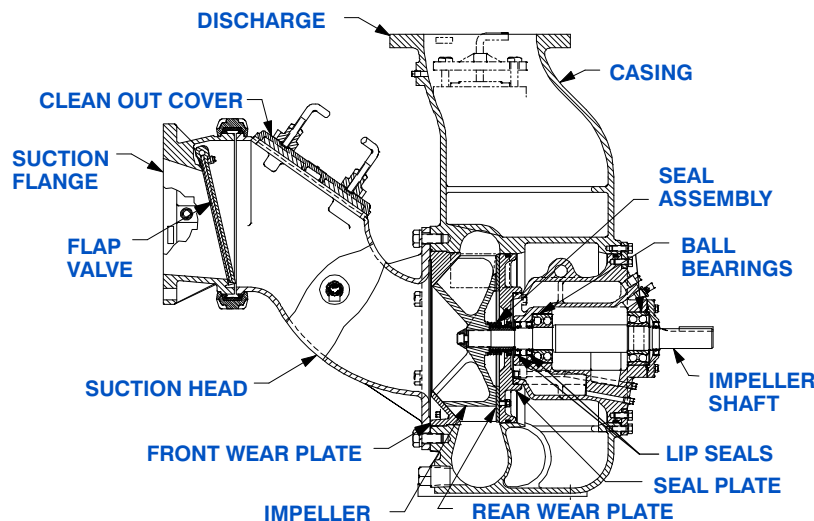
10" ASA Discharge.

250 mm DIN 2527 (PN 16) Suction and Discharge

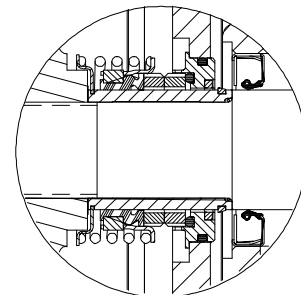
(Specify Model T10A3S-B /FM).**Consult Factory for Applications Exceeding Maximum Pressure and/or Temperature Indicated.***Shown with Optional Discharge Spool Flange (Suction/Discharge Spool Flanges Available in ASA or DIN Standard Sizes).**

SEAL SPECIFICATIONS

Cartridge Type, Mechanical, Oil-Lubricated, Double Floating, Self-Aligning. Tungsten Titanium Carbide Rotating and Stationary Faces. Stainless Steel No. 316 Stationary Seat. Stainless Steel No. 18-8 Cage and Spring. Maximum Temperature of Liquid Pumped, 160°F (71°C).*



SEAL DETAIL



THE GORMAN-RUPP COMPANY • MANSFIELD, OHIO

GORMAN-RUPP OF CANADA LIMITED • ST. THOMAS, ONTARIO, CANADA

www.grpumps.com

Specifications Subject to Change Without Notice

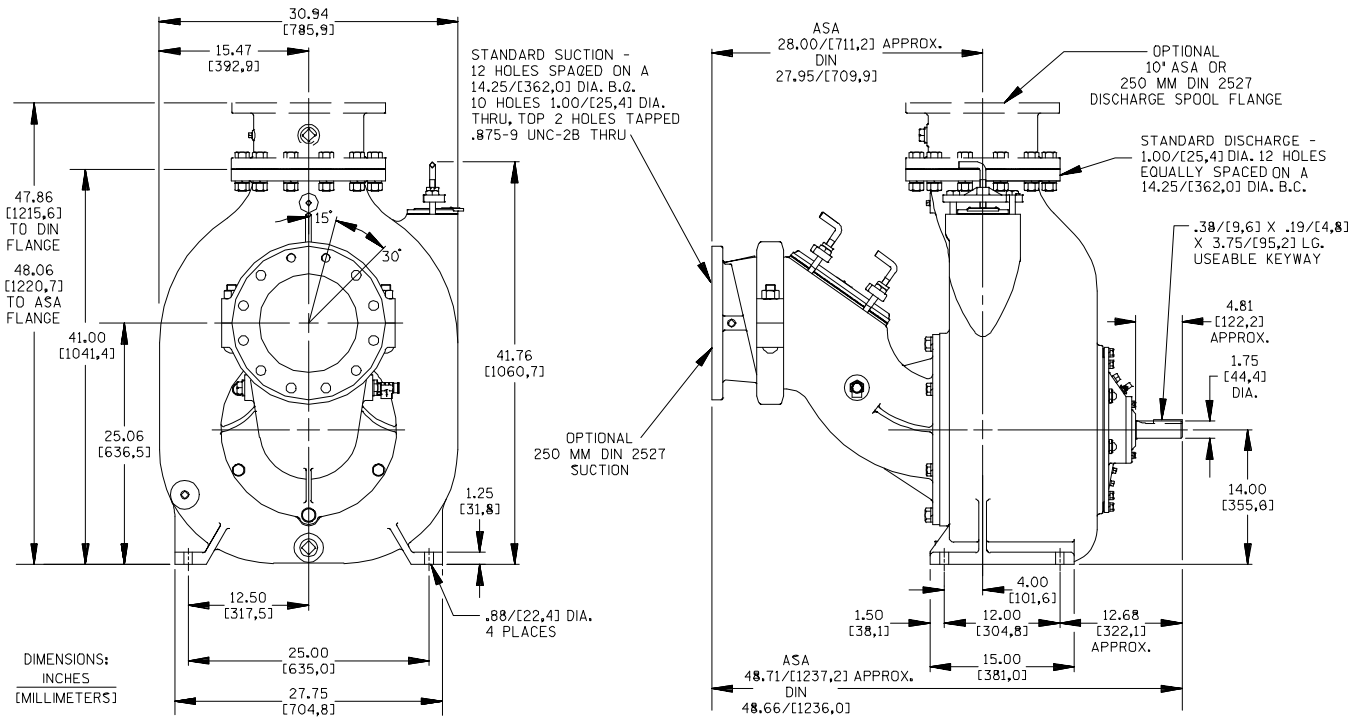
Printed in U.S.A.

Specification Data

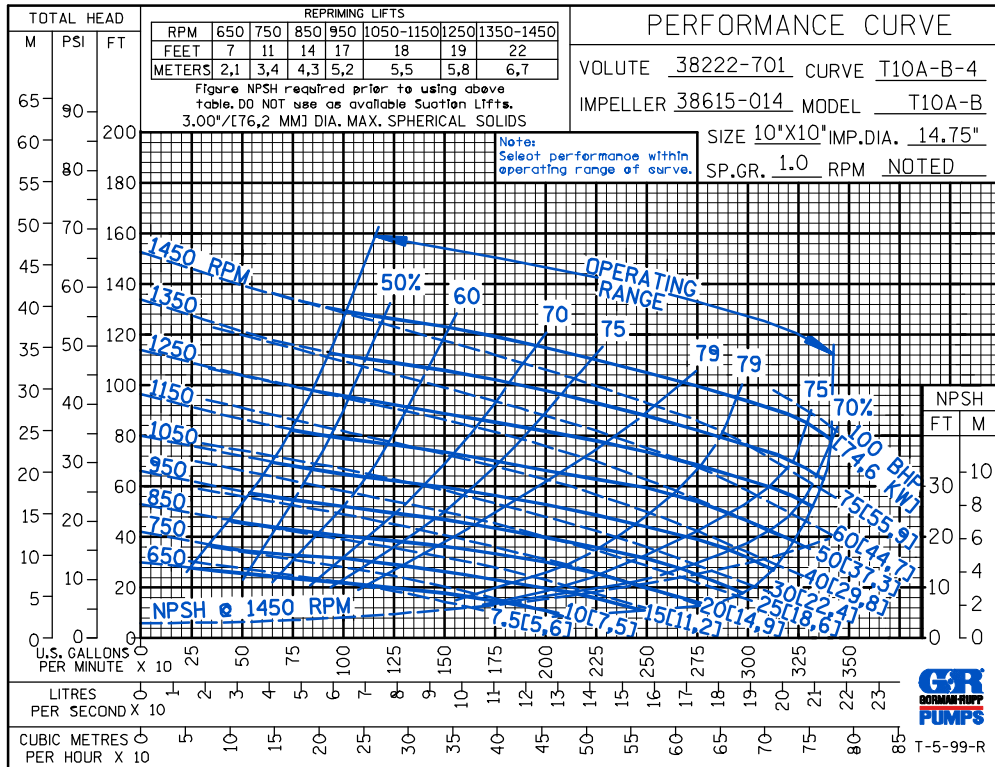
NET WEIGHT: 1440 LBS. (653 KG.)*
SHIPPING WEIGHT: 1590 LBS. (721 KG.)*
EXPORT CRATE: 70.3 CU. FT. (2 CU. M.)
***ADD 71 LBS. (32,2 KG.) W/DISCH SPOOL FLANGE**

SECTION 55, PAGE 2400

APPROXIMATE DIMENSIONS and WEIGHTS



OPTIONAL ASA OR DIN STANDARD SPOOL FLANGES AVAILABLE



THE GORMAN-RUPP COMPANY • MANSFIELD, OHIO

GORMAN-RUPP OF CANADA LIMITED • ST. THOMAS, ONTARIO, CANADA

Specifications Subject to Change Without Notice

Printed in U.S.A.

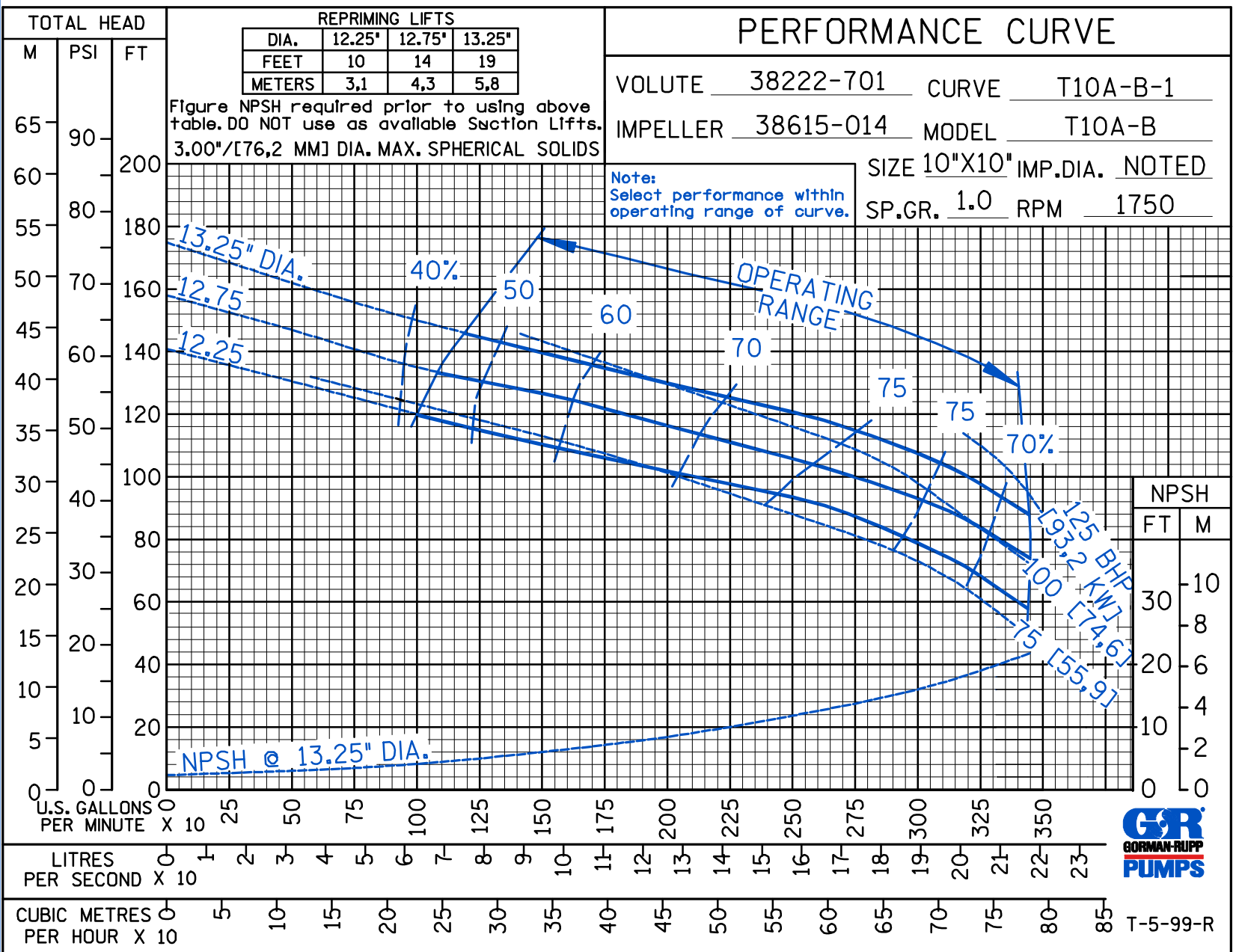


THE GORMAN-RUPP COMPANY • MANSFIELD, OHIO
 GORMAN-RUPP OF CANADA LIMITED • ST. THOMAS, ONTARIO, CANADA
 www.grpumps.com

© Copyright by the Gorman-Rupp Company 2007

Specifications Subject to Change Without Notice

Printed in U.S.A.



CDSW

Curve Data

Sec. 55

PAGE 2451.1
 FEBRUARY 2007



T-5-99-R

CDSW

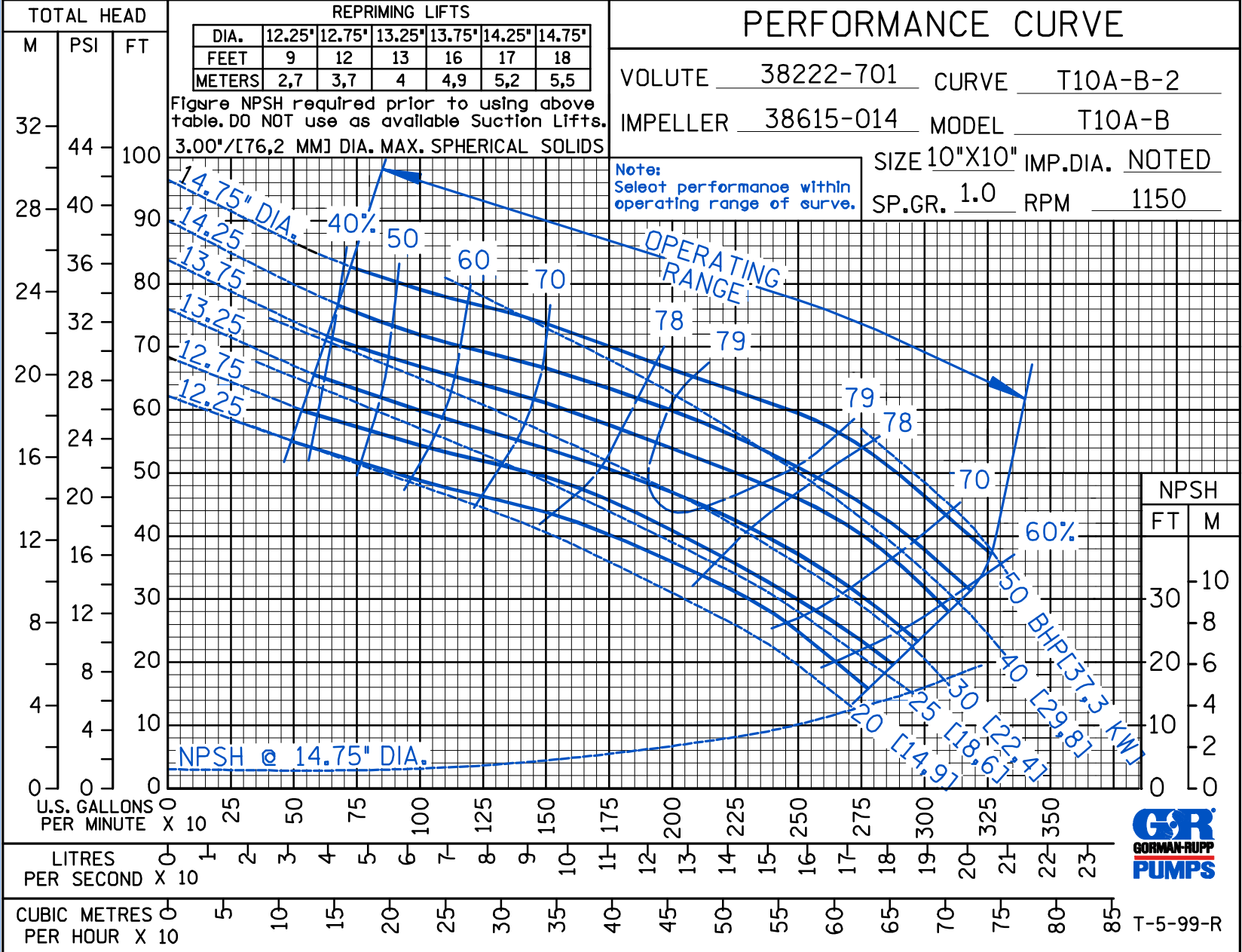
PERFORMANCE CURVE

VOLUTE 38222-701 CURVE T10A-B-2
 IMPELLER 38615-014 MODEL T10A-B
 SIZE 10"X10" IMP.DIA. NOTED
 SP.GR. 1.0 RPM 1150

REPRIMING LIFTS						
DIA.	12.25"	12.75"	13.25"	13.75"	14.25"	14.75"
FEET	9	12	13	16	17	18
METERS	2,7	3,7	4	4,9	5,2	5,5

Figure NPSH required prior to using above table. DO NOT use as available Suction Lifts.
 3.00"/[76,2 MM] DIA. MAX. SPHERICAL SOLIDS

Note:
 Select performance within operating range of curve.



T-5-99-R



THE GORMAN-RUPP COMPANY • MANSFIELD, OHIO
 GORMAN-RUPP OF CANADA LIMITED • ST. THOMAS, ONTARIO, CANADA

www.grpumps.com
 Specifications Subject to Change Without Notice

© Copyright by the Gorman-Rupp Company 2007

Printed in U.S.A.

CDSW

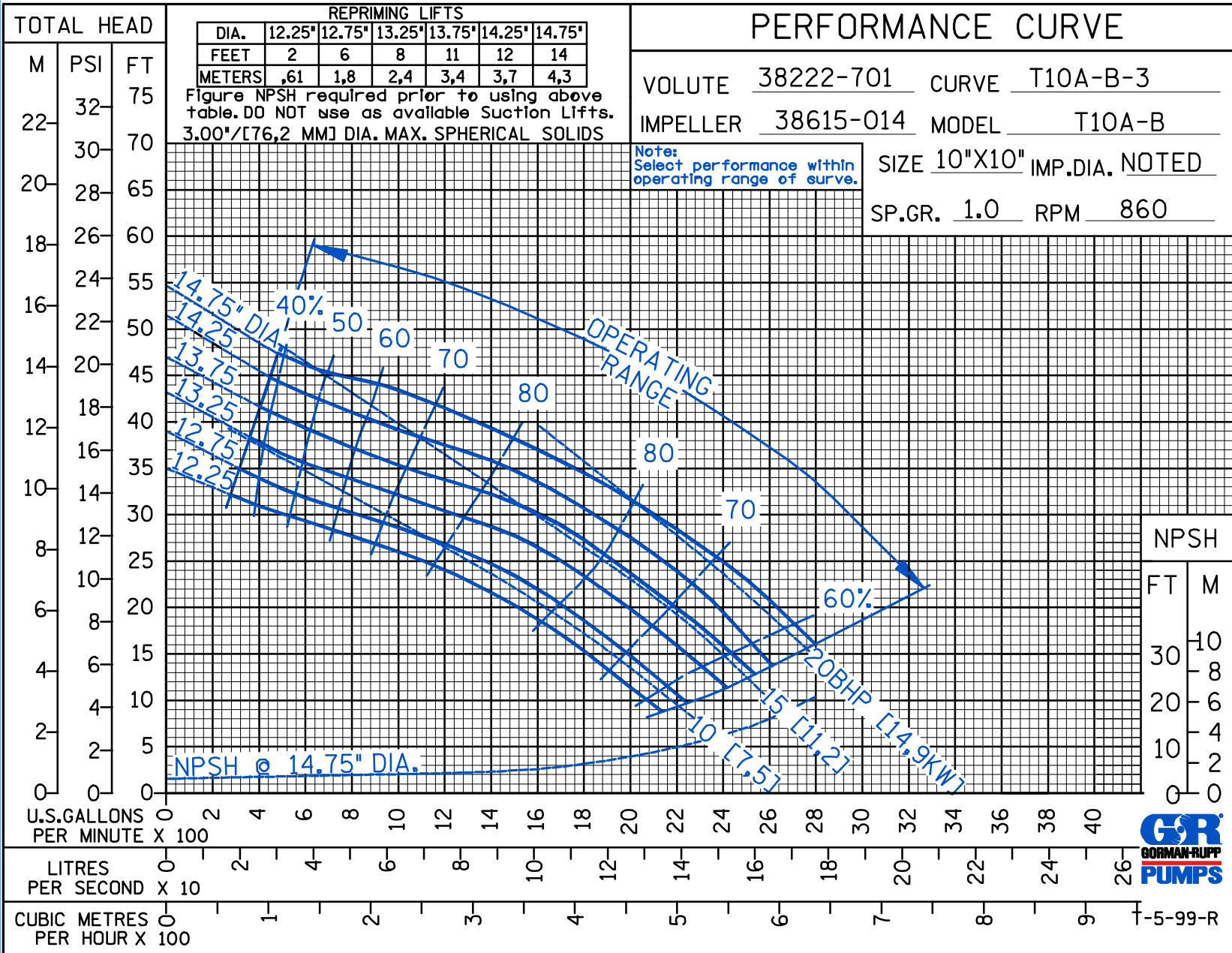
PERFORMANCE CURVE

VOLUTE 38222-701 CURVE T10A-B-3
 IMPELLER 38615-014 MODEL T10A-B
 SIZE 10"X10" IMP.DIA. NOTED
 SP.GR. 1.0 RPM 860

Note:
Select performance within
operating range of curve.

REPRIMING LIFTS						
DIA.	12.25"	12.75"	13.25"	13.75"	14.25"	14.75"
FEET	2	6	8	11	12	14
METERS	.61	1.8	2.4	3.4	3.7	4.3

Figure NPSH required prior to using above table. DO NOT use as available Suction Lifts.
 3.00"/[76,2 MM] DIA. MAX. SPHERICAL SOLIDS



NPSH
FT M



-5-99-R



THE GORMAN-RUPP COMPANY • MANSFIELD, OHIO

GORMAN-RUPP OF CANADA LIMITED • ST. THOMAS, ONTARIO, CANADA

www.grpumps.com

Specifications Subject to Change Without Notice

Printed in U.S.A.

CDS W

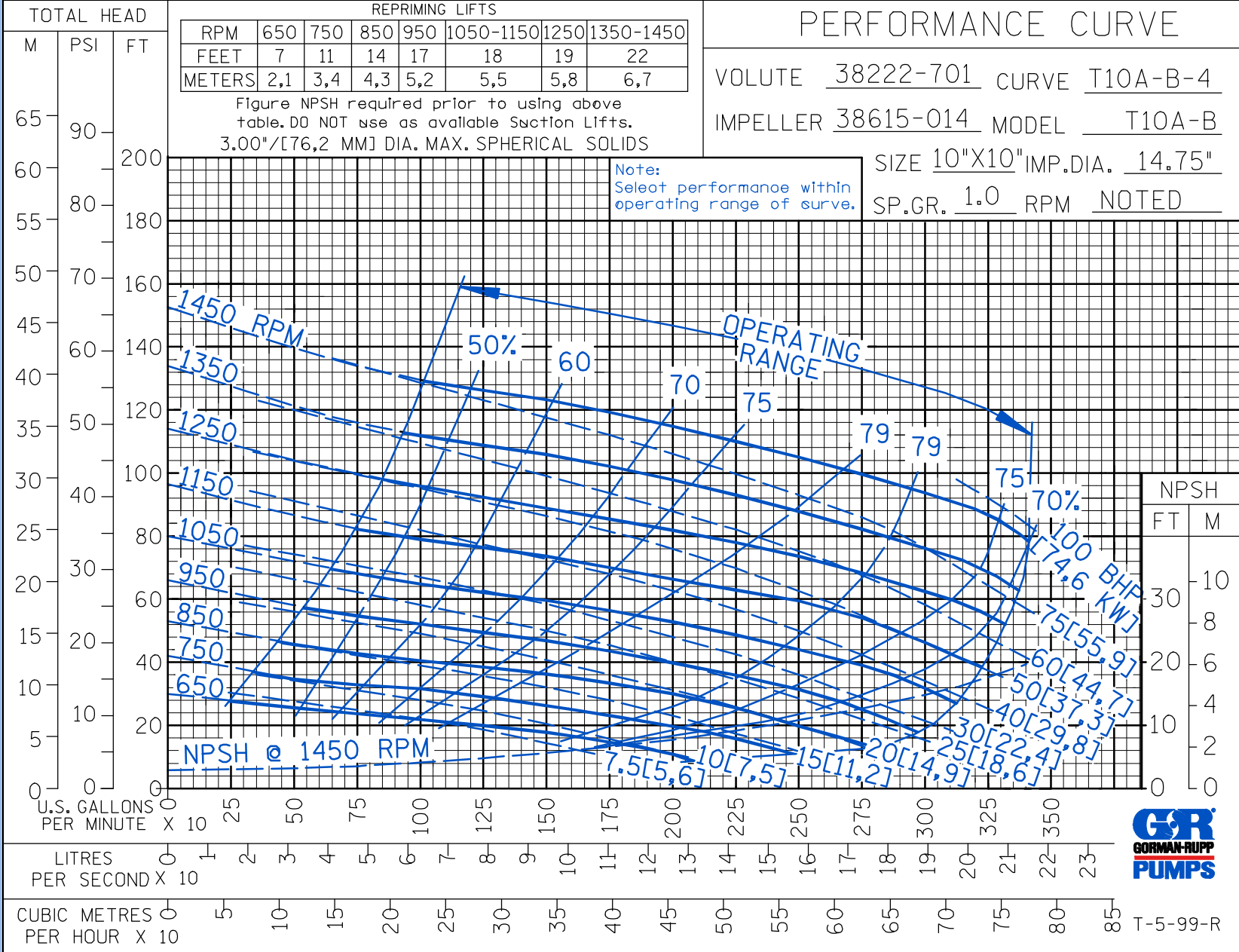
PERFORMANCE CURVE

VOLUTE 38222-701 CURVE T10A-B-4
 IMPELLER 38615-014 MODEL T10A-B
 SIZE 10"X10" IMP.DIA. 14.75"
 SP.GR. 1.0 RPM NOTED

REPRIMING LIFTS							
RPM	650	750	850	950	1050-1150	1250	1350-1450
FEET	7	11	14	17	18	19	22
METERS	2,1	3,4	4,3	5,2	5,5	5,8	6,7

Figure NPSH required prior to using above table. DO NOT use as available Suction Lifts.
 3.00"/[76,2 MM] DIA. MAX. SPHERICAL SOLIDS

Note:
 Select performance within operating range of curve.



THE GORMAN-RUPP COMPANY • MANSFIELD, OHIO
 GORMAN-RUPP OF CANADA LIMITED • ST. THOMAS, ONTARIO, CANADA

www.grpumps.com
 Specifications Subject to Change Without Notice

Printed in U.S.A.

T-5-99-R



THE GORMAN-RUPP COMPANY • MANSFIELD, OHIO

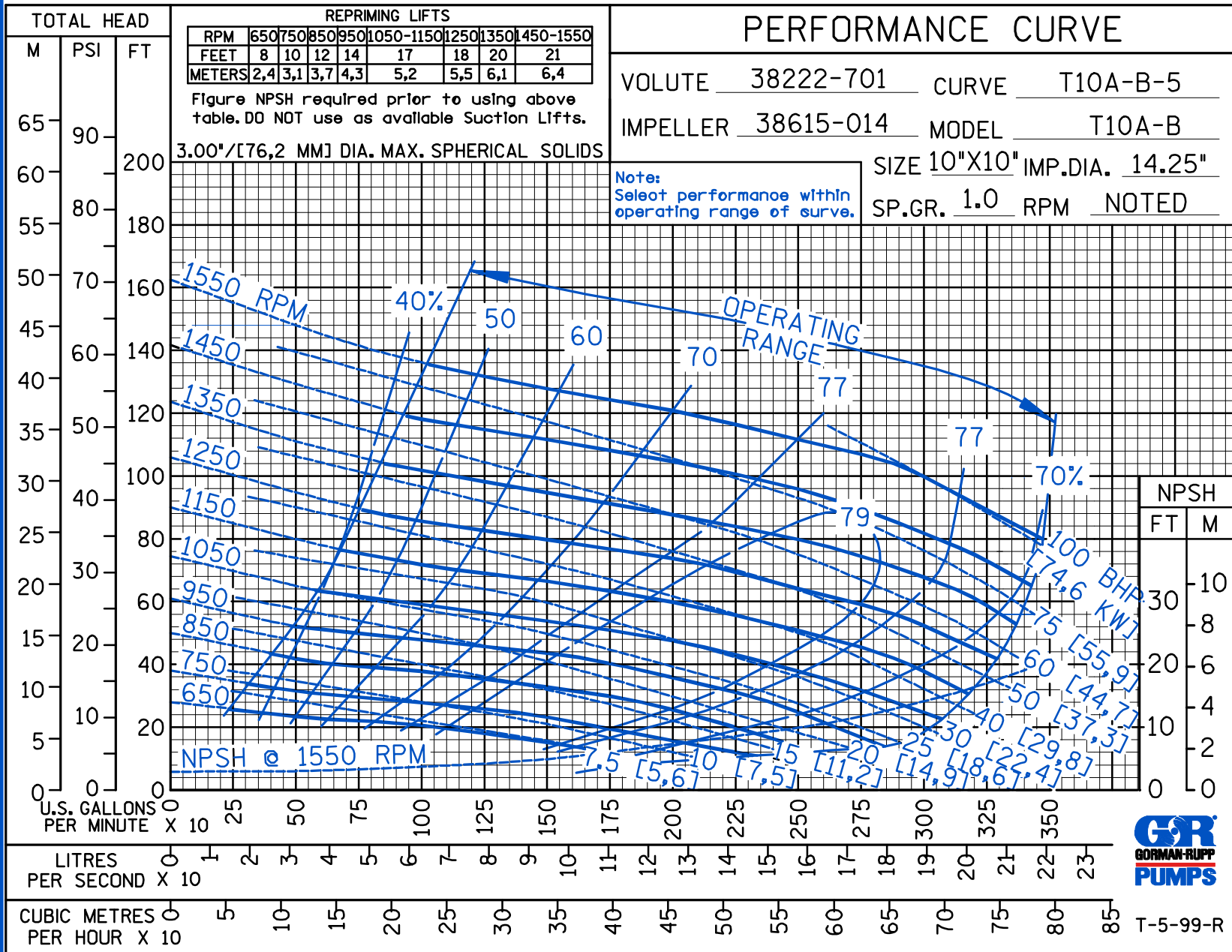
GORMAN-RUPP OF CANADA LIMITED • ST. THOMAS, ONTARIO, CANADA

www.grpumps.com

Specifications Subject to Change Without Notice

Printed in U.S.A.

© Copyright by the Gorman-Rupp Company 2007



CDSW

Curve Data

Sec. 55

PAGE 2451.5
FEBRUARY 2007

CDSW

PERFORMANCE CURVE

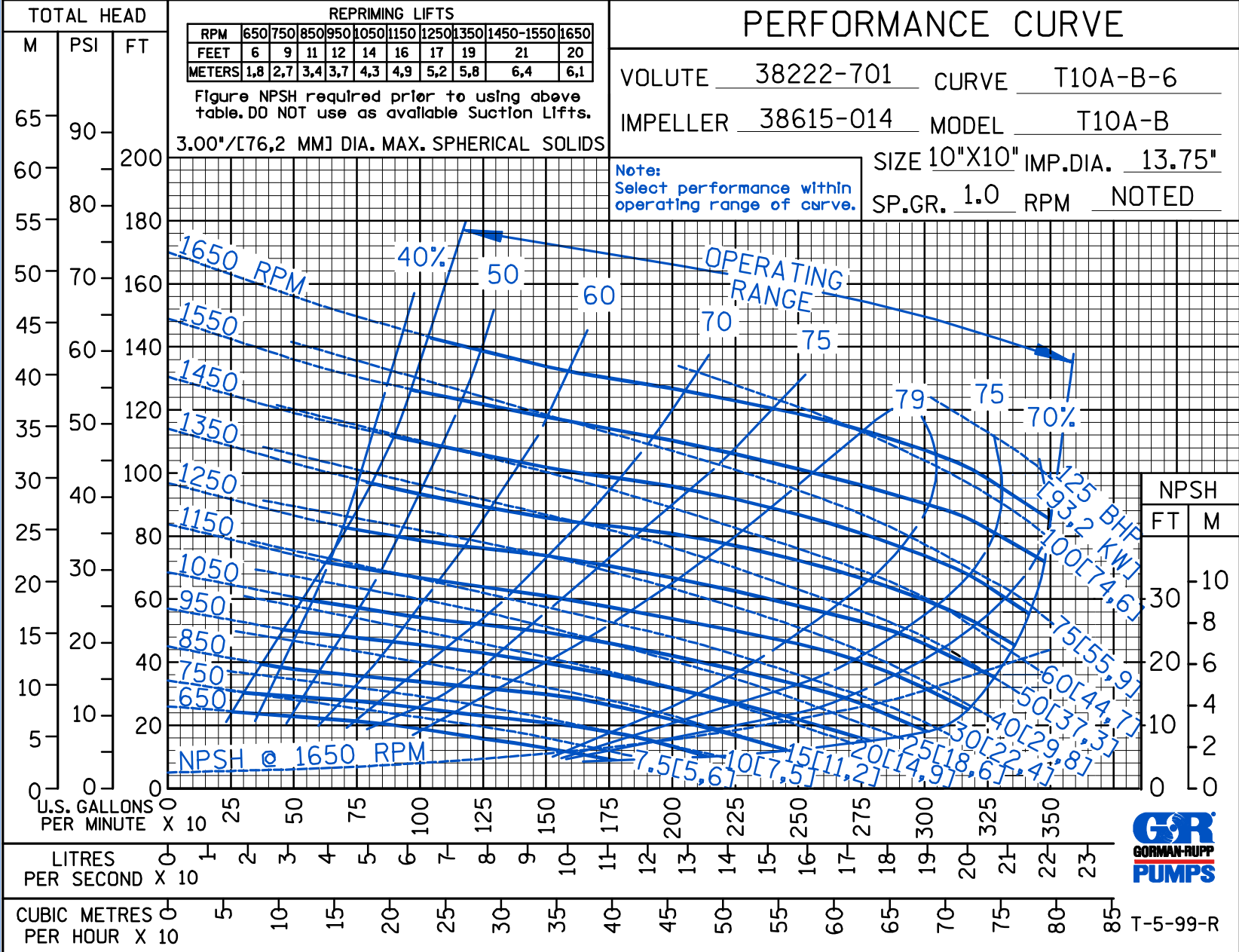
VOLUTE 38222-701 CURVE T10A-B-6
 IMPELLER 38615-014 MODEL T10A-B
 SIZE 10"X10" IMP.DIA. 13.75"
 SP.GR. 1.0 RPM NOTED

Note:
Select performance within
operating range of curve.

REPRIMING LIFTS										
RPM	650	750	850	950	1050	1150	1250	1350	1450-1550	1650
FEET	6	9	11	12	14	16	17	19	21	20
METERS	1,8	2,7	3,4	3,7	4,3	4,9	5,2	5,8	6,4	6,1

Figure NPSH required prior to using above table. DO NOT use as available Suction Lifts.

3.00"/[76,2 MM] DIA. MAX. SPHERICAL SOLIDS



T-5-99-R



THE GORMAN-RUPP COMPANY • MANSFIELD, OHIO
 GORMAN-RUPP OF CANADA LIMITED • ST. THOMAS, ONTARIO, CANADA
 www.grpumps.com

Specifications Subject to Change Without Notice

Printed in U.S.A.



THE GORMAN-RUPP COMPANY • MANSFIELD, OHIO

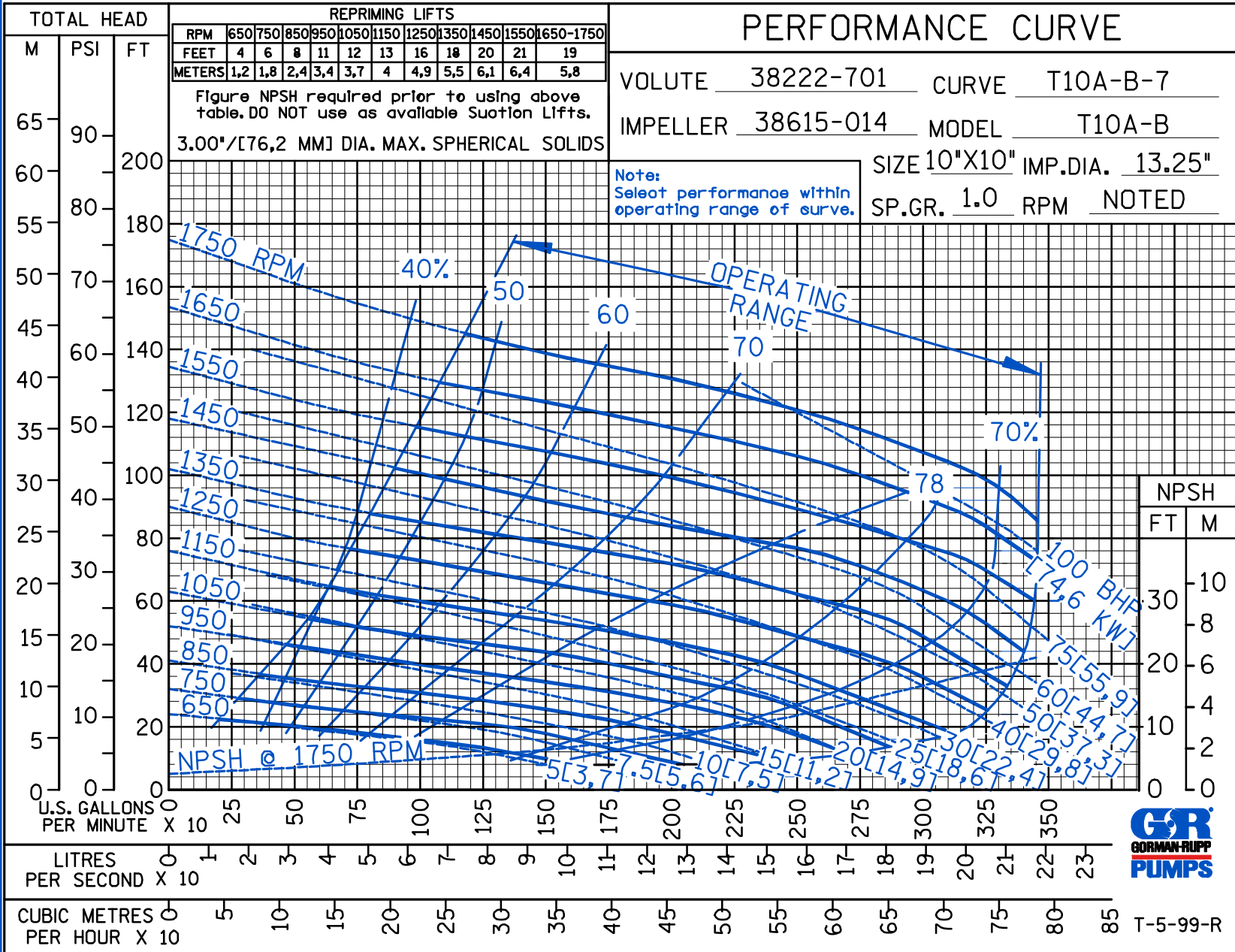
GORMAN-RUPP OF CANADA LIMITED • ST. THOMAS, ONTARIO, CANADA

www.grpumps.com

© Copyright by the Gorman-Rupp Company 2007

Specifications Subject to Change Without Notice

Printed in U.S.A.



CDSW

Curve Data

Sec. 55

PAGE 2451.7
FEBRUARY 2007

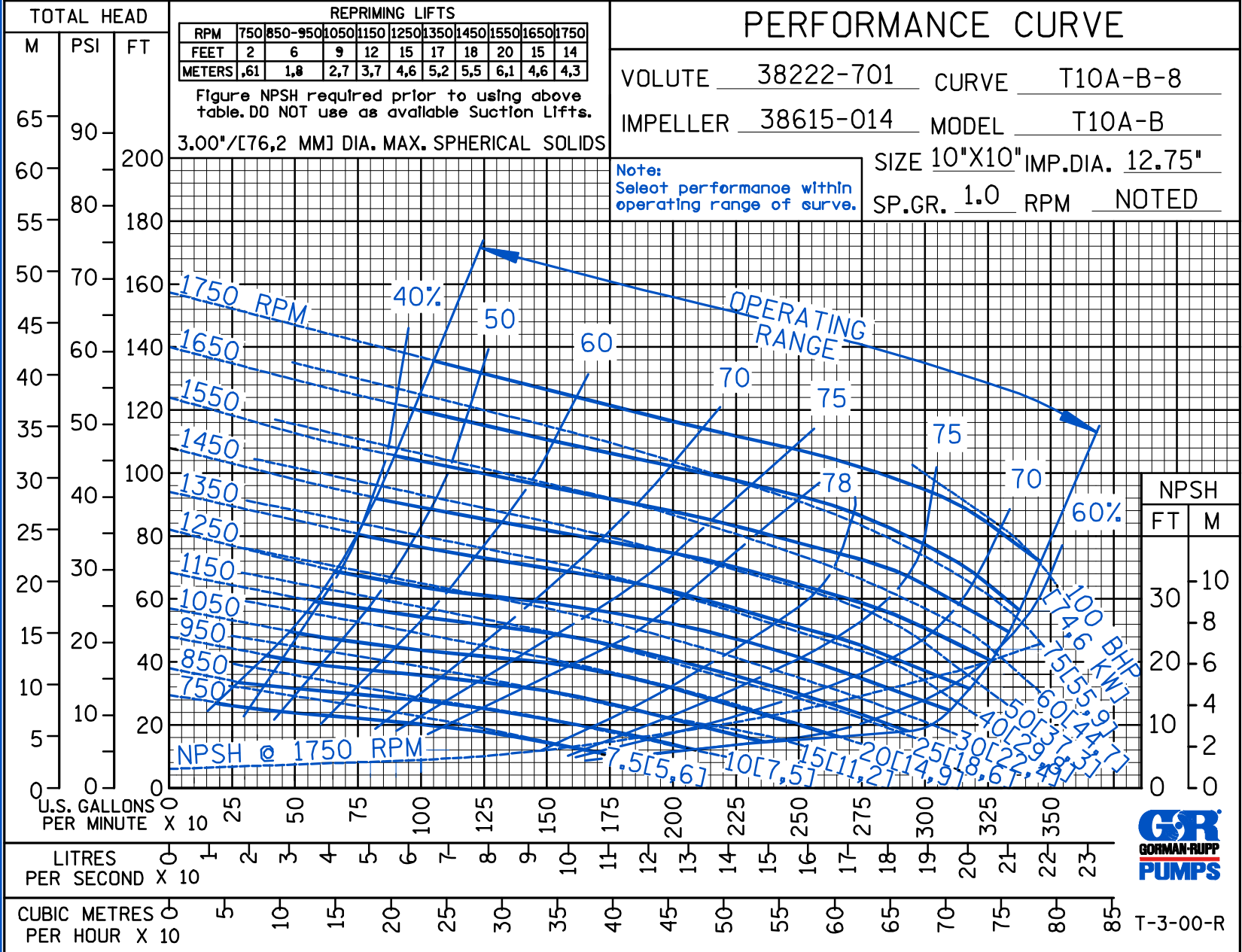


THE GORMAN-RUPP COMPANY • MANSFIELD, OHIO
 GORMAN-RUPP OF CANADA LIMITED • ST. THOMAS, ONTARIO, CANADA
 www.grpumps.com

© Copyright by the Gorman-Rupp Company 2007

Specifications Subject to Change Without Notice

Printed in U.S.A.





THE GORMAN-RUPP COMPANY • MANSFIELD, OHIO

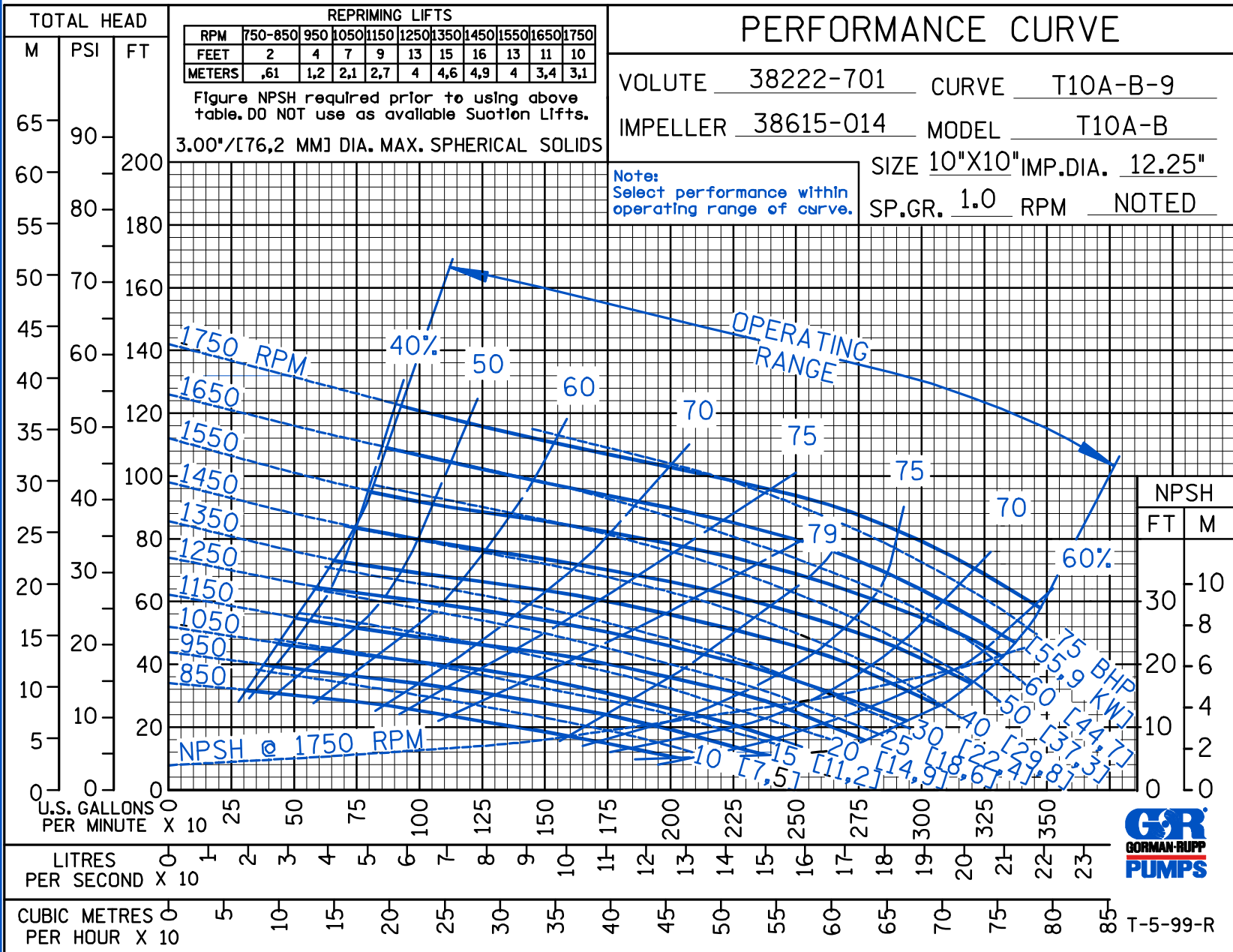
GORMAN-RUPP OF CANADA LIMITED • ST. THOMAS, ONTARIO, CANADA

www.grpumps.com

Specifications Subject to Change Without Notice

Printed in U.S.A.

© Copyright by the Gorman-Rupp Company 2007



CDSW

Curve Data

Sec. 55

PAGE 2451.9
FEBRUARY 2007

CDSW

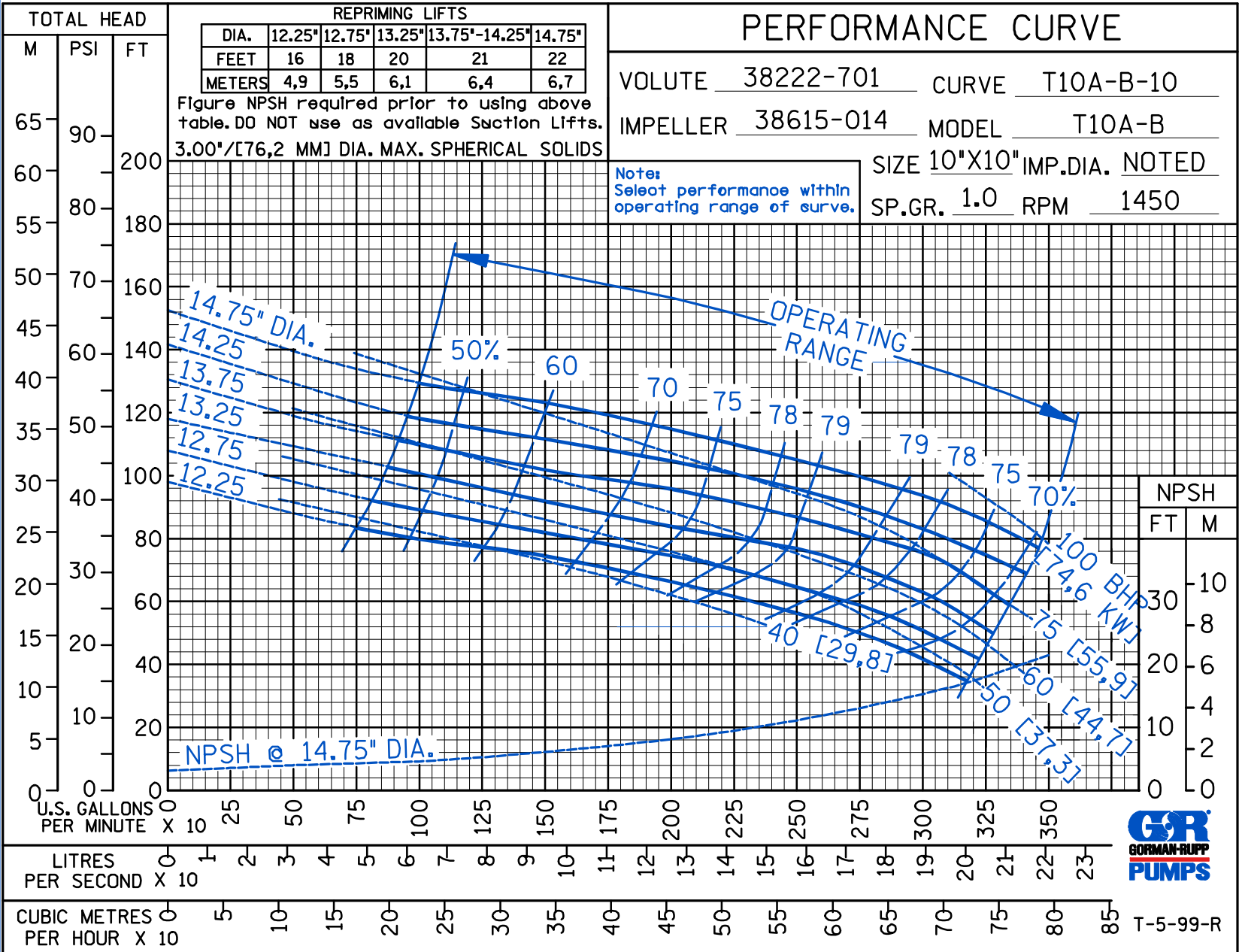
PERFORMANCE CURVE

VOLUTE 38222-701 CURVE T10A-B-10
 IMPELLER 38615-014 MODEL T10A-B
 SIZE 10"X10" IMP.DIA. NOTED
 SP.GR. 1.0 RPM 1450

REPRIMING LIFTS					
DIA.	12.25"	12.75"	13.25"	13.75"-14.25"	14.75"
FEET	16	18	20	21	22
METERS	4,9	5,5	6,1	6,4	6,7

Figure NPSH required prior to using above table. DO NOT use as available Suction Lifts. 3.00"/[76,2 MM] DIA. MAX. SPHERICAL SOLIDS

Notes:
 Select performance within operating range of curve.



T-5-99-R



THE GORMAN-RUPP COMPANY • MANSFIELD, OHIO
 GORMAN-RUPP OF CANADA LIMITED • ST. THOMAS, ONTARIO, CANADA
 www.grpumps.com

Specifications Subject to Change Without Notice

© Copyright by the Gorman-Rupp Company 2007

Printed in U.S.A.

CDSW

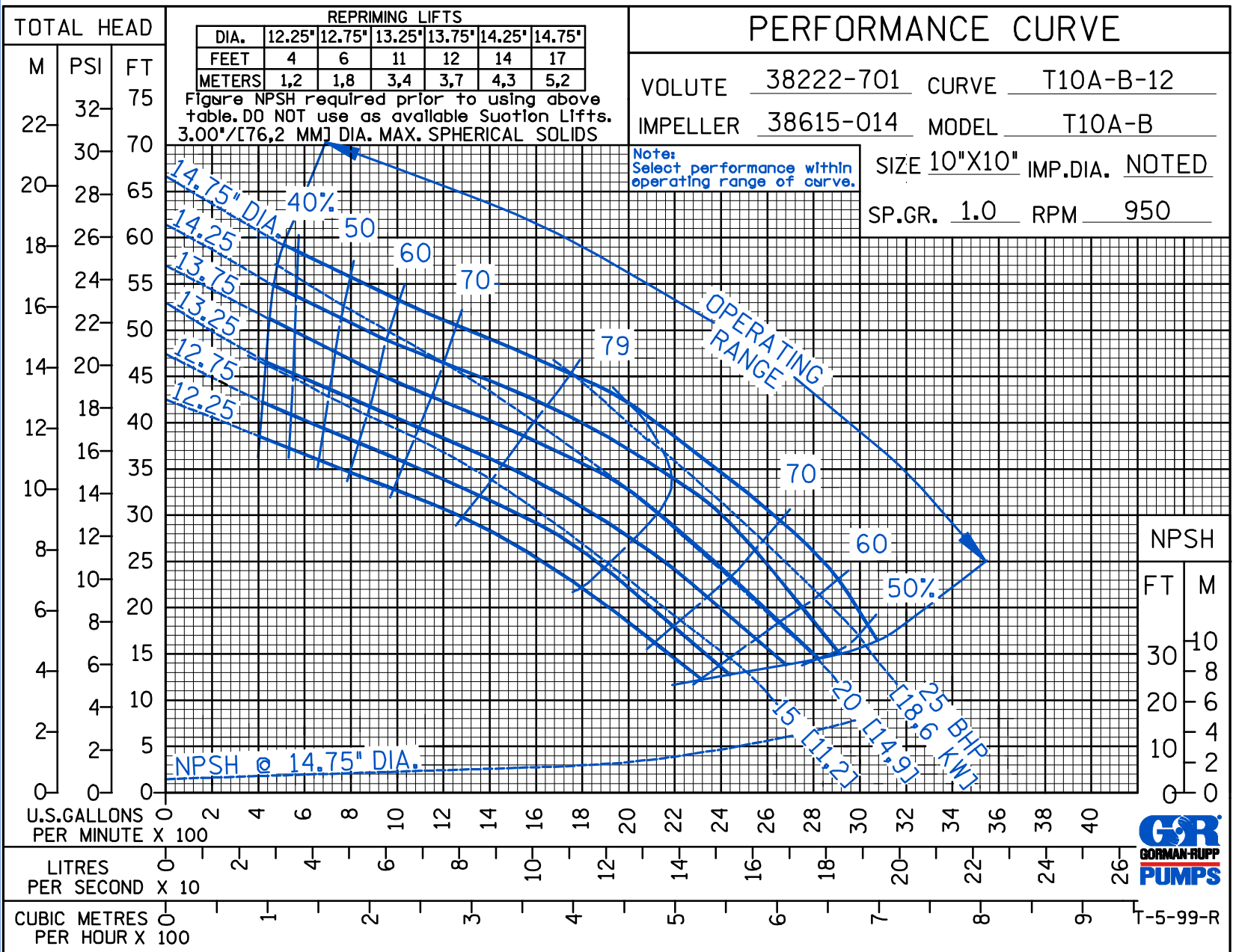
PERFORMANCE CURVE

VOLUTE 38222-701 CURVE T10A-B-12
 IMPELLER 38615-014 MODEL T10A-B
 SIZE 10"X10" IMP.DIA. NOTED
 SP.GR. 1.0 RPM 950

Note:
Select performance within
operating range of curve.

REPRIMING LIFTS						
DIA.	12.25"	12.75"	13.25"	13.75"	14.25"	14.75"
FEET	4	6	11	12	14	17
METERS	1,2	1,8	3,4	3,7	4,3	5,2

Figure NPSH required prior to using above table. DO NOT use as available Suction Lifts. 3.00"/[76,2 MM] DIA. MAX. SPHERICAL SOLIDS



NPSH
 FT M
 30 10
 20 8
 10 6
 0 4
 0 2
 0 0



T-5-99-R



THE GORMAN-RUPP COMPANY • MANSFIELD, OHIO

GORMAN-RUPP OF CANADA LIMITED • ST. THOMAS, ONTARIO, CANADA

www.grpumps.com

Specifications Subject to Change Without Notice

© Copyright by the Gorman-Rupp Company 2007

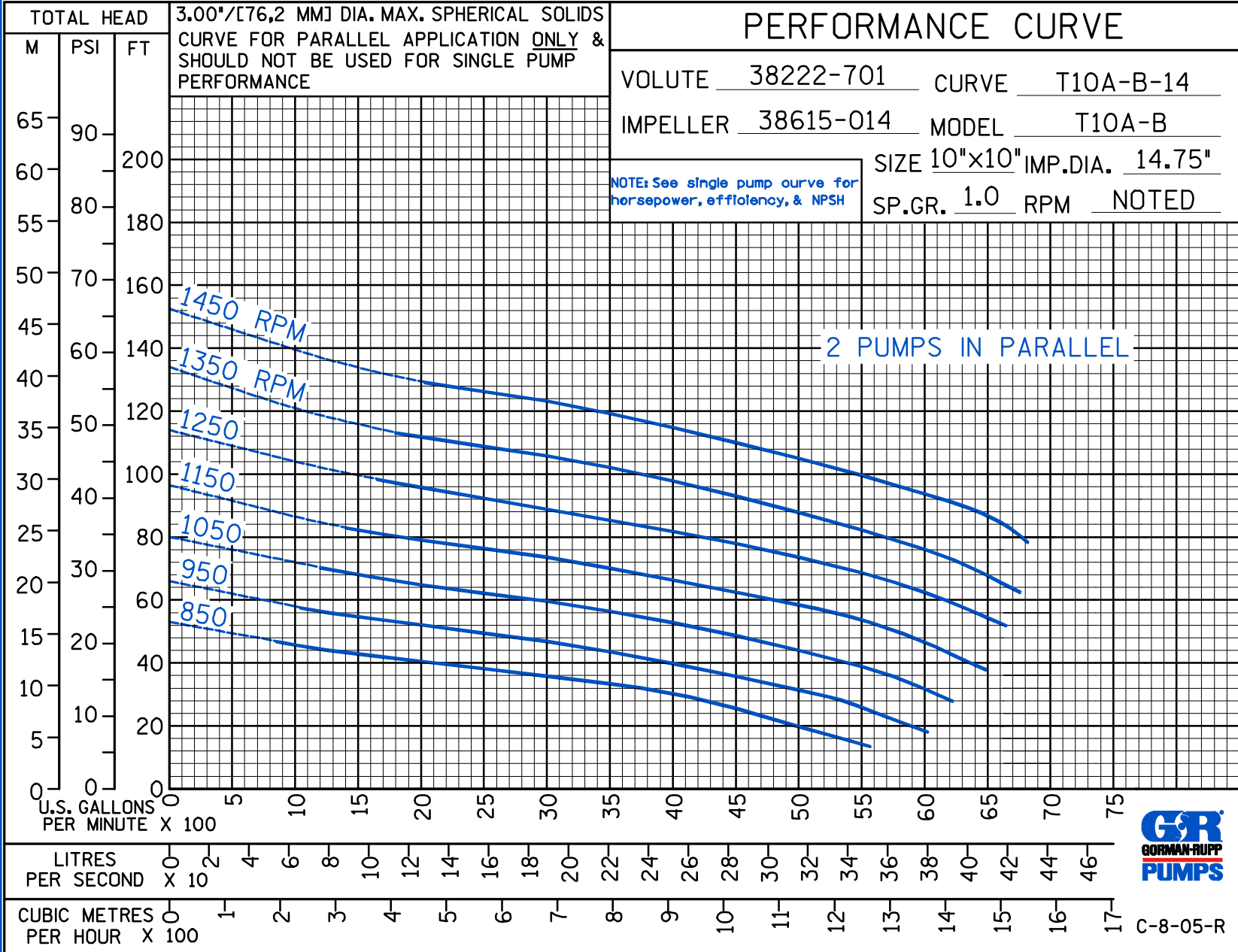
Printed in U.S.A.

D S W

PERFORMANCE CURVE

VOLUTE 38222-701 CURVE T10A-B-14
 IMPELLER 38615-014 MODEL T10A-B
 SIZE 10"X10" IMP.DIA. 14.75"
 SP.GR. 1.0 RPM NOTED

NOTE: See single pump curve for horsepower, efficiency, & NPSH



C-8-05-R



THE GORMAN-RUPP COMPANY • MANSFIELD, OHIO
 GORMAN-RUPP OF CANADA LIMITED • ST. THOMAS, ONTARIO, CANADA
 www.grpumps.com

Specifications Subject to Change Without Notice

Printed in U.S.A.

D S W

PERFORMANCE CURVE

VOLUTE 38222-701 CURVE T10A-B-15

IMPELLER 38615-014 MODEL T10A-B

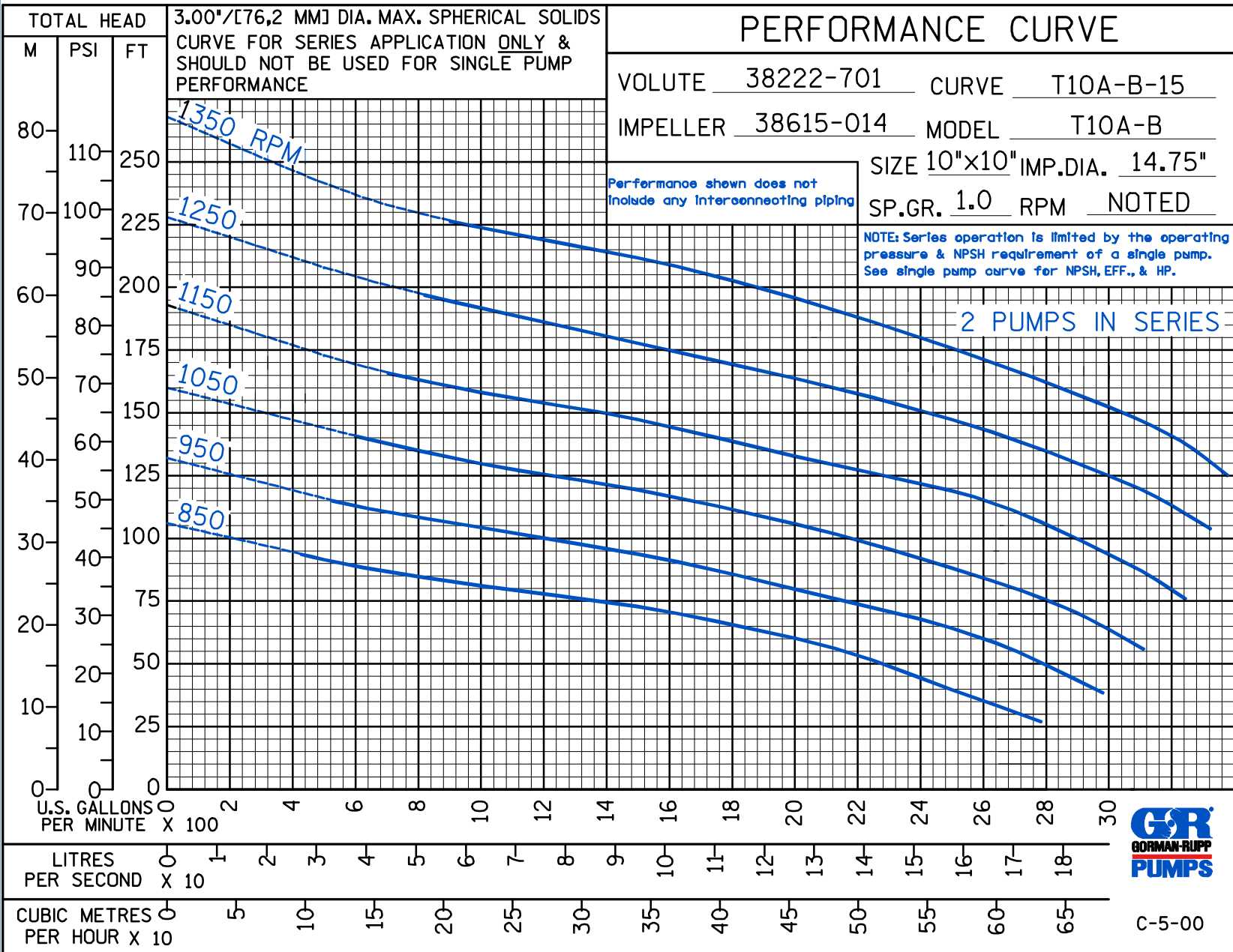
SIZE 10"X10" IMP.DIA. 14.75"

SP.GR. 1.0 RPM NOTED

NOTE: Series operation is limited by the operating pressure & NPSH requirement of a single pump. See single pump curve for NPSH, EFF., & HP.

Performance shown does not include any interconnecting piping

2 PUMPS IN SERIES



C-5-00



THE GORMAN-RUPP COMPANY • MANSFIELD, OHIO

GORMAN-RUPP OF CANADA LIMITED • ST. THOMAS, ONTARIO, CANADA

www.grpumps.com

Specifications Subject to Change Without Notice

Printed in U.S.A.