

ACE



# Basic Pedestal Standard Centrifugal Pump Model VG3C3-B Size 4" x 3"

## PUMP SPECIFICATIONS

**Size:** 4" x 3" (102 mm x 76 mm) Flanged.

**Casing:** Gray Iron 40.

Maximum Operating Pressure 306 psi (2110 kPa).\*

**Enclosed Type, Six Vane Impeller:** Gray Iron 40.

Handles 9/16" (14,3 mm) Diameter Spherical Solids.

**Impeller Shaft:** Steel 1045.

**Shaft Sleeve:** Stainless Steel 420.

**Seal Plate:** Gray Iron 40.

**Bearing Housing:** Gray Iron 40.

**Radial Bearing:** Open Single Row Ball.

**Thrust Bearing:** Open Double Row Ball.

**Bearing Lubrication:** SAE 30 Non-Detergent Oil.

**Gaskets:** Nitrile Rubber.

**O-Ring:** Fluorocarbon (DuPont Viton® or Equivalent).

**Hardware:** Standard Plated Steel.

**Oil Level Sight Gauge.**

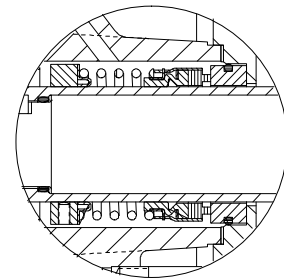
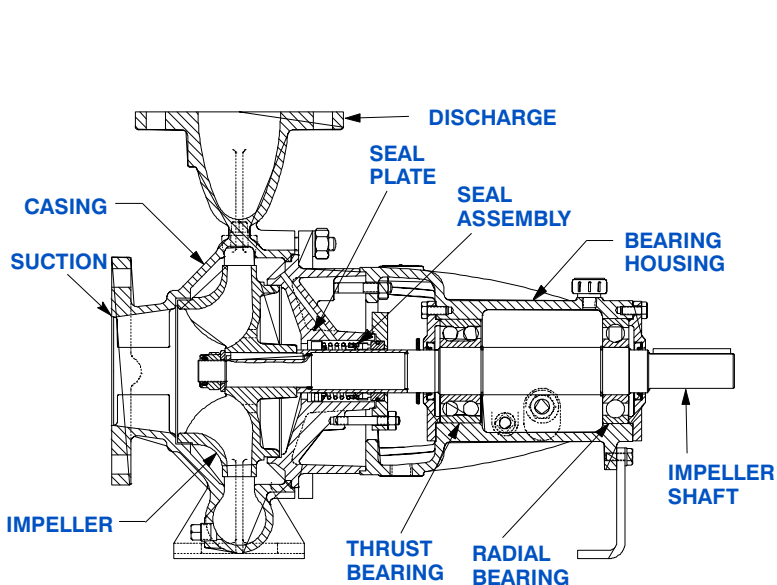
**Optional Equipment:** NPT Suction and Discharge Flanges.

Strainer. Stainless Steel Impeller. Mechanical Seal with

Fluorocarbon Elastomers (DuPont Viton® or Equivalent).

Hand Primer.

*\*Consult Factory for Applications Exceeding  
Maximum Pressure and/or Temperature Indicated.*



## SEAL DETAIL

Type 1, Mechanical, Self-Lubricated. Carbon Rotating Face. Ceramic Stationary Seat. Buna-N Elastomers. Stainless Steel Cage and Spring. Maximum Temperature of Liquid Pumped, 160°F (71°C).\*



THE GORMAN-RUPP COMPANY • MANSFIELD, OHIO

GORMAN-RUPP OF CANADA LIMITED • ST. THOMAS, ONTARIO, CANADA

www.grpumps.com

Specifications Subject to Change Without Notice

Printed in U.S.A.

**Specification Data**

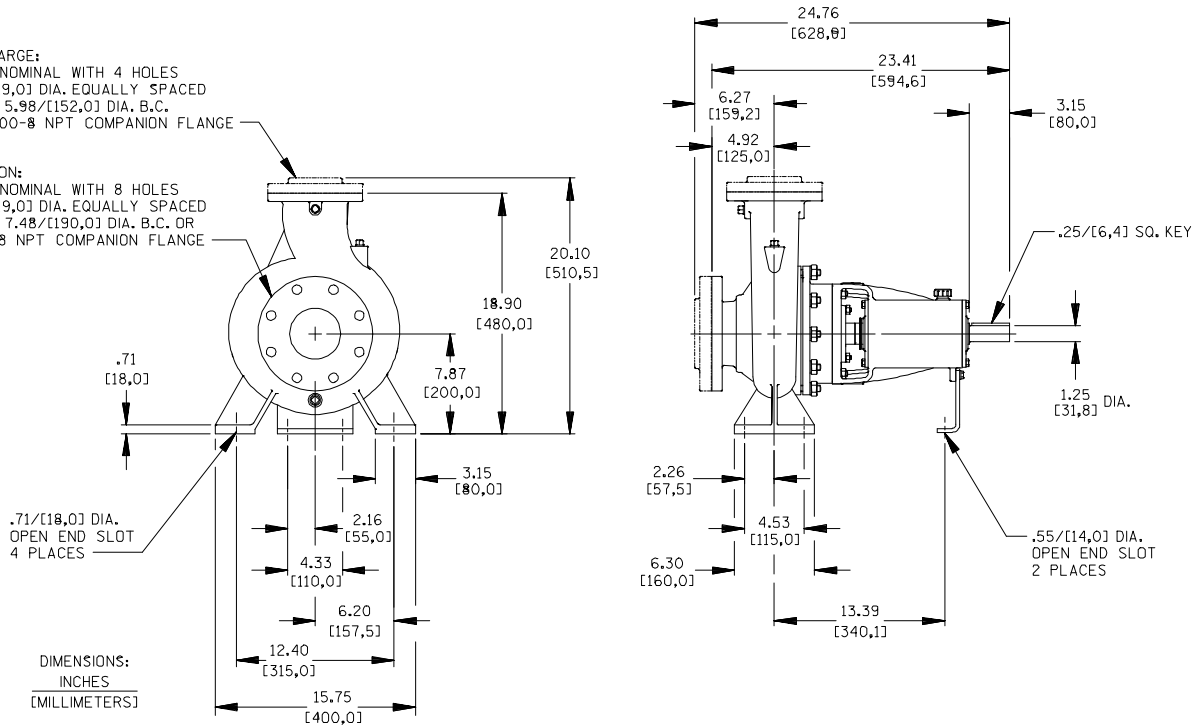
SECTION 70, PAGE 494

APPROXIMATE DIMENSIONS and WEIGHTS

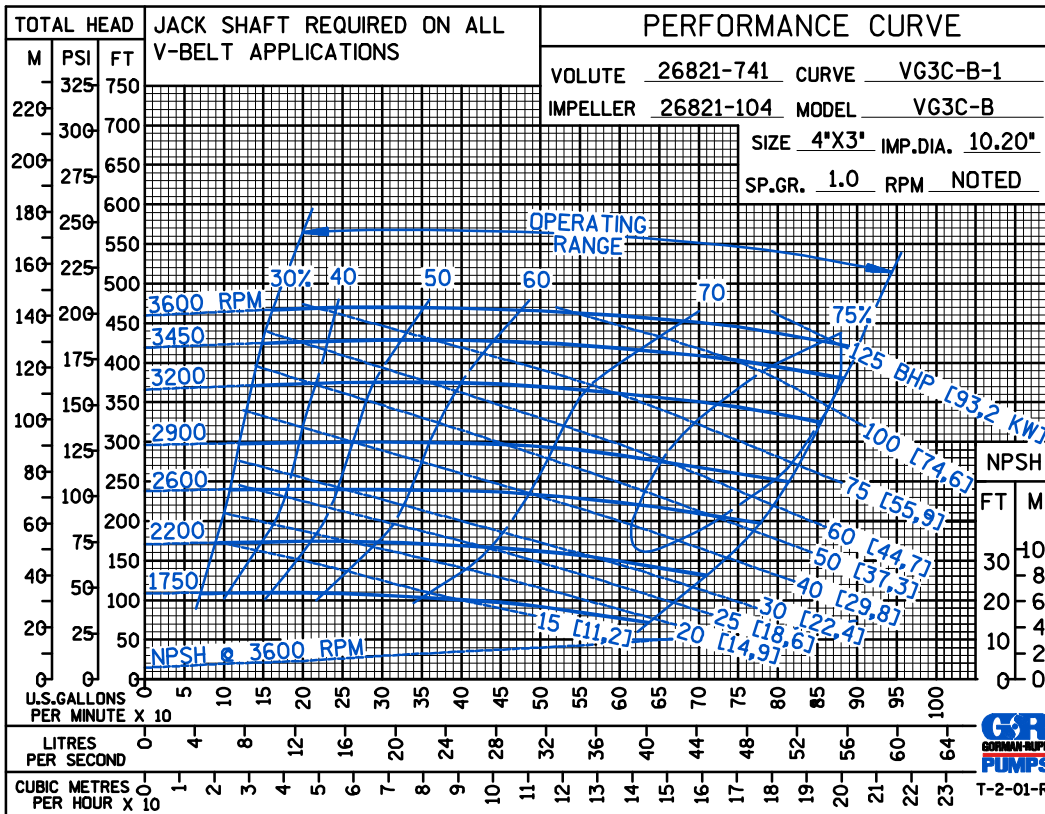
**NET WEIGHT: 160 LBS. (72,6 KG.)**  
**SHIPPING WEIGHT: 175 LBS. (79,4 KG.)**  
**EXPORT CRATE SIZE: 11.9 CU. FT. (0,34 CU. M.)**

**DISCHARGE:**  
 3.00 NOMINAL WITH 4 HOLES  
 .75/[19,0] DIA. EQUALLY SPACED  
 ON A 5.98/[152,0] DIA. B.C.  
 OR 3.00-8 NPT COMPANION FLANGE

**SUCTION:**  
 4.00 NOMINAL WITH 8 HOLES  
 .75/[19,0] DIA. EQUALLY SPACED  
 ON A 7.48/[190,0] DIA. B.C. DR  
 4.00-8 NPT COMPANION FLANGE



DIMENSIONS:  
 INCHES  
 [MILLIMETERS]



THE GORMAN-RUPP COMPANY • MANSFIELD, OHIO

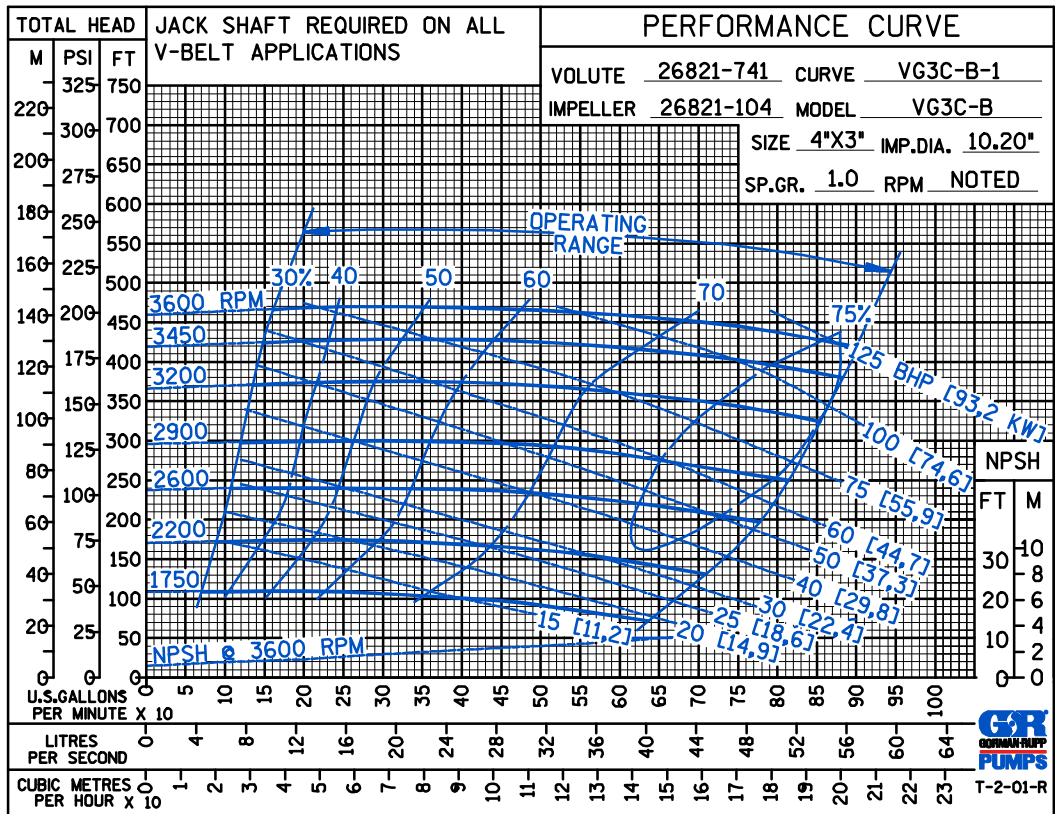
GORMAN-RUPP OF CANADA LIMITED • ST. THOMAS, ONTARIO, CANADA

Specifications Subject to Change Without Notice

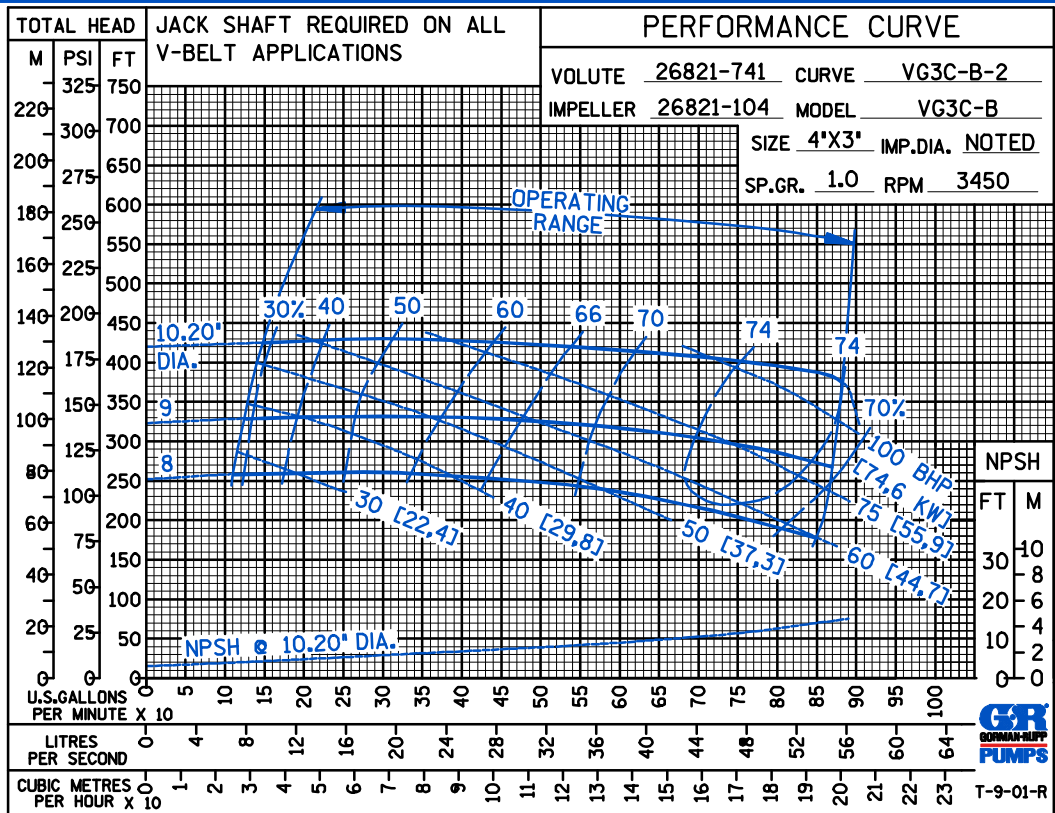
Printed in U.S.A.

ACE

PERFORMANCE  
BASED ON  
WATER



PERFORMANCE  
BASED ON  
WATER



THE GORMAN-RUPP COMPANY • MANSFIELD, OHIO

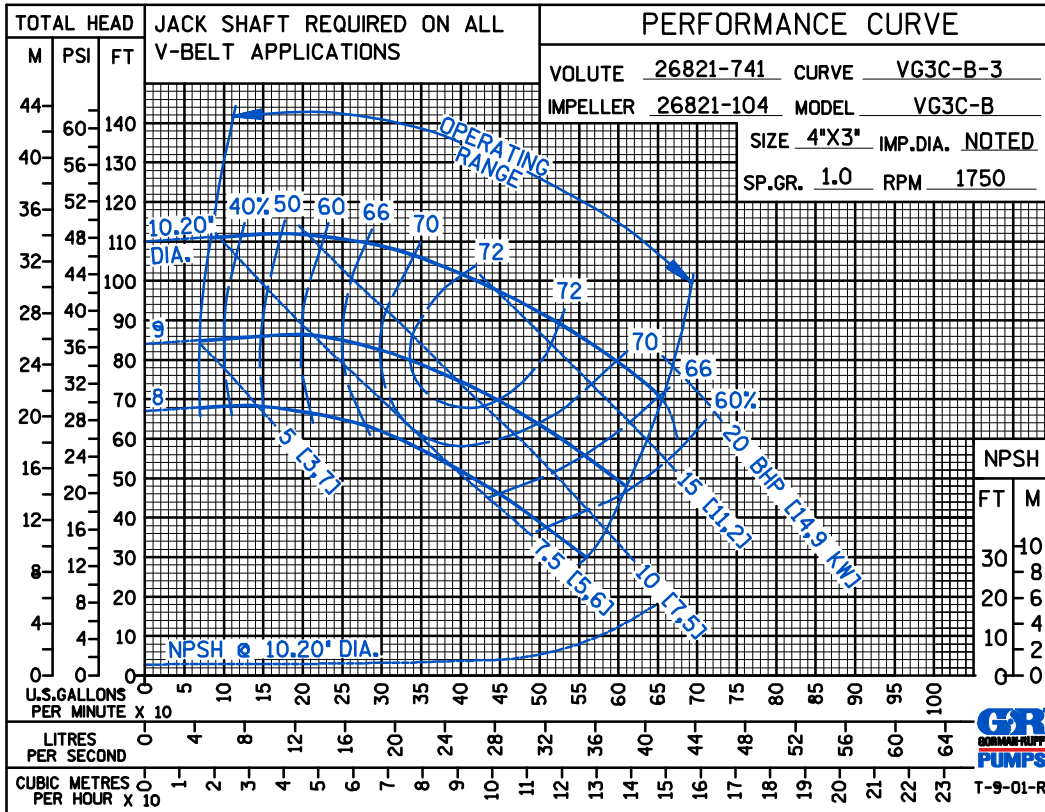
GORMAN-RUPP OF CANADA LIMITED • ST. THOMAS, ONTARIO, CANADA

Specifications Subject to Change Without Notice

Printed in U.S.A.

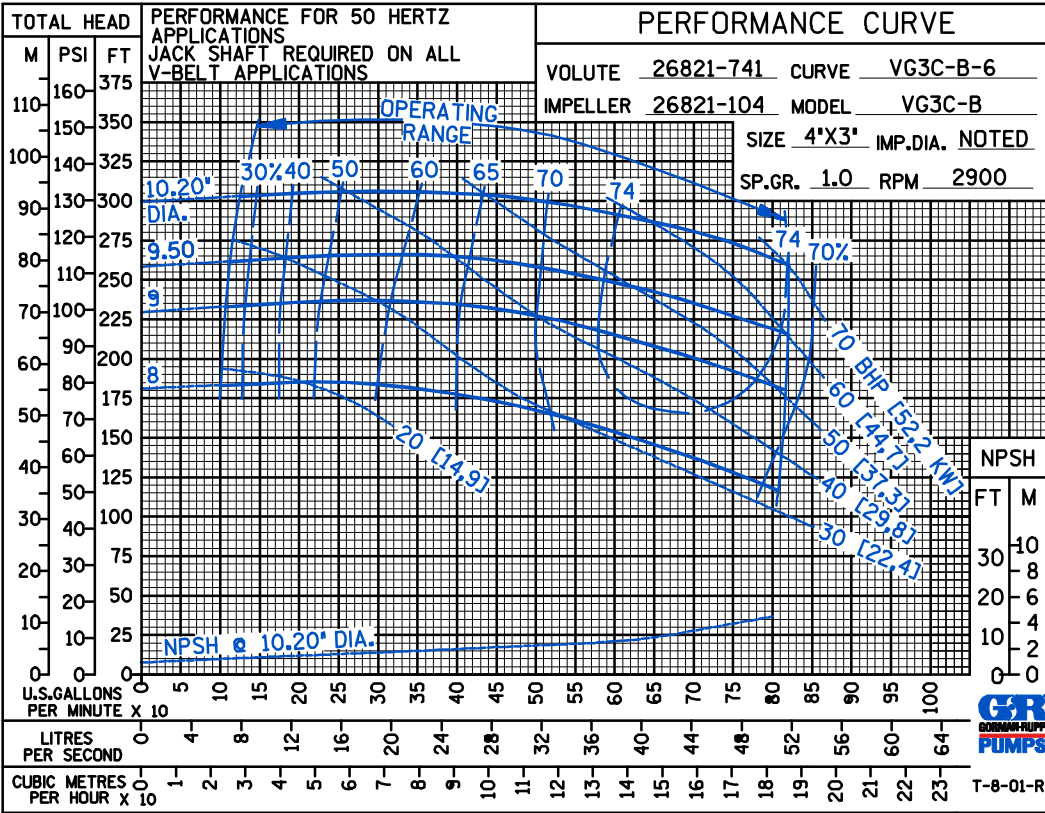
ACE

PERFORMANCE  
BASED ON  
WATER



T-9-01-R

PERFORMANCE  
BASED ON  
WATER



T-8-01-R



THE GORMAN-RUPP COMPANY • MANSFIELD, OHIO

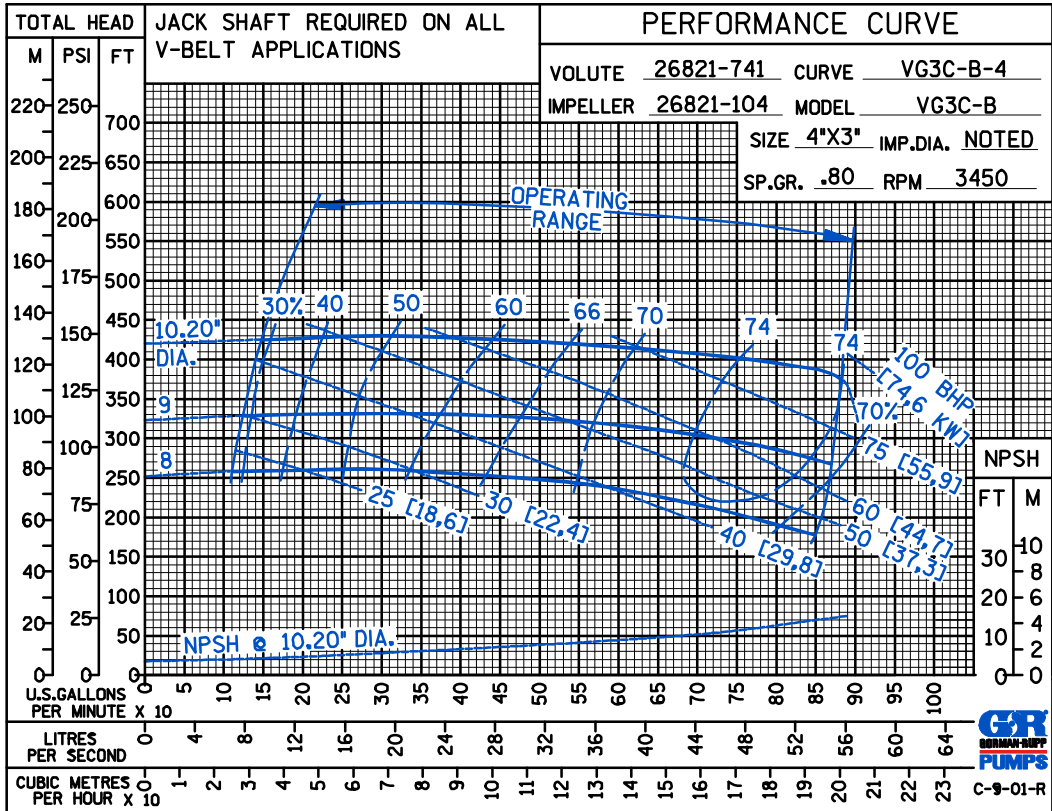
GORMAN-RUPP OF CANADA LIMITED • ST. THOMAS, ONTARIO, CANADA

Specifications Subject to Change Without Notice

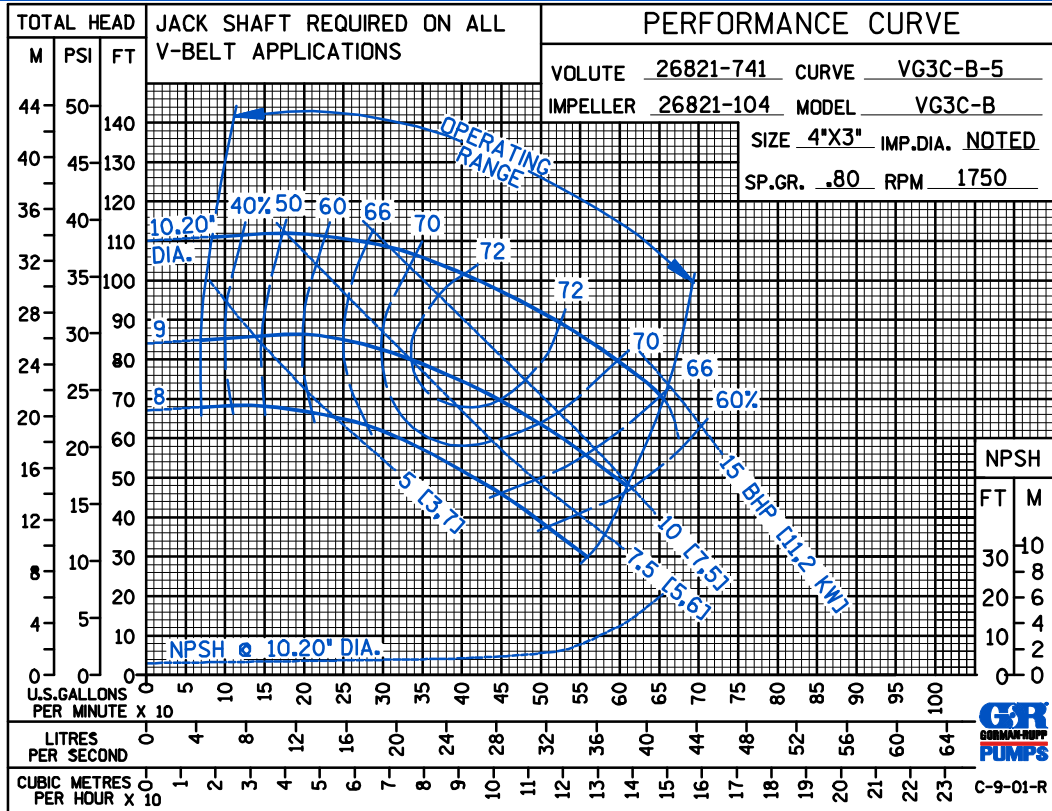
Printed in U.S.A.

ACE

PERFORMANCE  
BASED ON  
PETROLEUM



PERFORMANCE  
BASED ON  
PETROLEUM



THE GORMAN-RUPP COMPANY • MANSFIELD, OHIO

GORMAN-RUPP OF CANADA LIMITED • ST. THOMAS, ONTARIO, CANADA

Specifications Subject to Change Without Notice

Printed in U.S.A.