



# Self Priming Centrifugal Pump

## Model T4C60SC-B

### Size 4" x 4"

**Super T SERIES**  
VARIOUS PATENTS APPLY



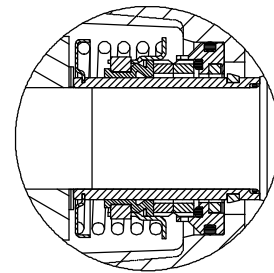
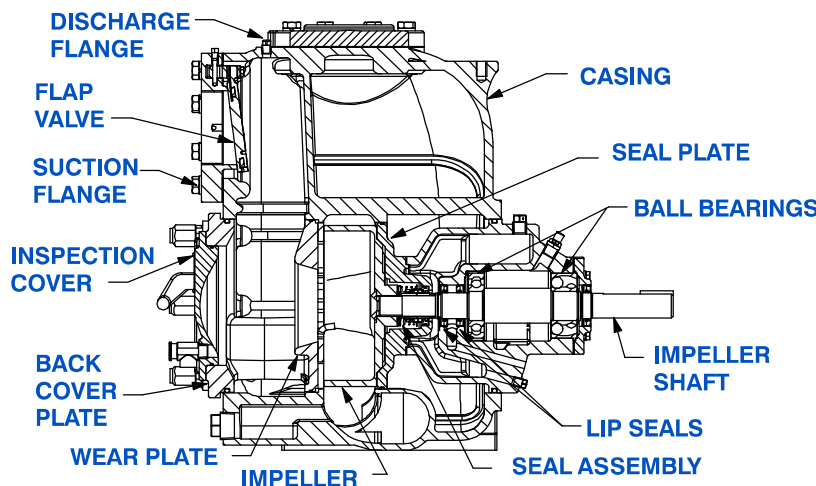
**PUMP SPECIFICATIONS**

- Size:** 4" x 4" (101 mm x 101 mm) NPT - Female.
- Casing:** Gray Iron 30.  
Maximum Operating Pressure 83 psi (572 kPa).\*
- Semi-Open Type, Two Vane Impeller:** Ductile Iron 65-45-12.  
Handles 3" (76,2 mm) Diameter Spherical Solids.
- Impeller Shaft:** Alloy Steel 4150.
- Shaft Sleeve:** Alloy Steel 4130.
- Replaceable Self-Cleaning Wear Plate:** Carbon Steel ASTM A6.
- Adjustable Back Cover Plate:** Gray Iron 30.
- Removable Inspection Cover Plate:** Gray Iron 30; 12 lbs. (5,4 kg.).
- Flap Valve:** Neoprene w/Nylon and Steel Reinforcing.
- Seal Plate:** Gray Iron 30.
- Bearing Housing:** Gray Iron 30.
- Radial Bearing:** Open Single Row Ball.
- Thrust Bearing:** Open Double Row Ball.  
**Bearing and Seal Cavity Lubrication:** SAE 30 Non-Detergent Oil.
- Flanges:** Gray Iron 30.
- Gaskets:** Buna-N, Compressed Synthetic Fibers, Vegetable Fiber, PTFE, Cork, and Rubber.
- O-Rings:** Buna-N.
- Hardware:** Standard Plated Steel.
- Brass Pressure Relief Valve.**
- Bearing and Seal Cavity Oil Level Sight Gauges.**
- Optional Equipment:** Tungsten Titanium Carbide Seal. Metal Bellows Seal. Automatic Air Release Valve. 120V/240V Casing Heater. High Pump Temperature Shutdown Kit. G-R Hard Iron Casing. Gray Iron 30 Suction and Discharge Spool Flanges:  
4" ASA (**Specify Model T4C60SC-B /F**).  
100 mm DIN 2527 (PN 16) (**Specify Model T4C60SC-B /FM**).



Shown with Optional Suction and Discharge Spool Flanges (Available in ASA or DIN Standard Sizes).

\*Consult Factory for Applications Exceeding Maximum Pressure and/or Temperature Indicated.



**SEAL DETAIL**

Cartridge Type, Mechanical, Oil-Lubricated, Double Floating, Self-Aligning. Silicon Carbide Rotating and Stationary Faces. Stainless Steel 316 Stationary Seat. Fluorocarbon Elastomers (DuPont Viton® or Equivalent). Stainless Steel 18-8 Cage and Spring. Maximum Temperature of Liquid Pumped, 160°F (71°C).\*



GORMAN-RUPP PUMPS

www.grpumps.com

Specifications Subject to Change Without Notice

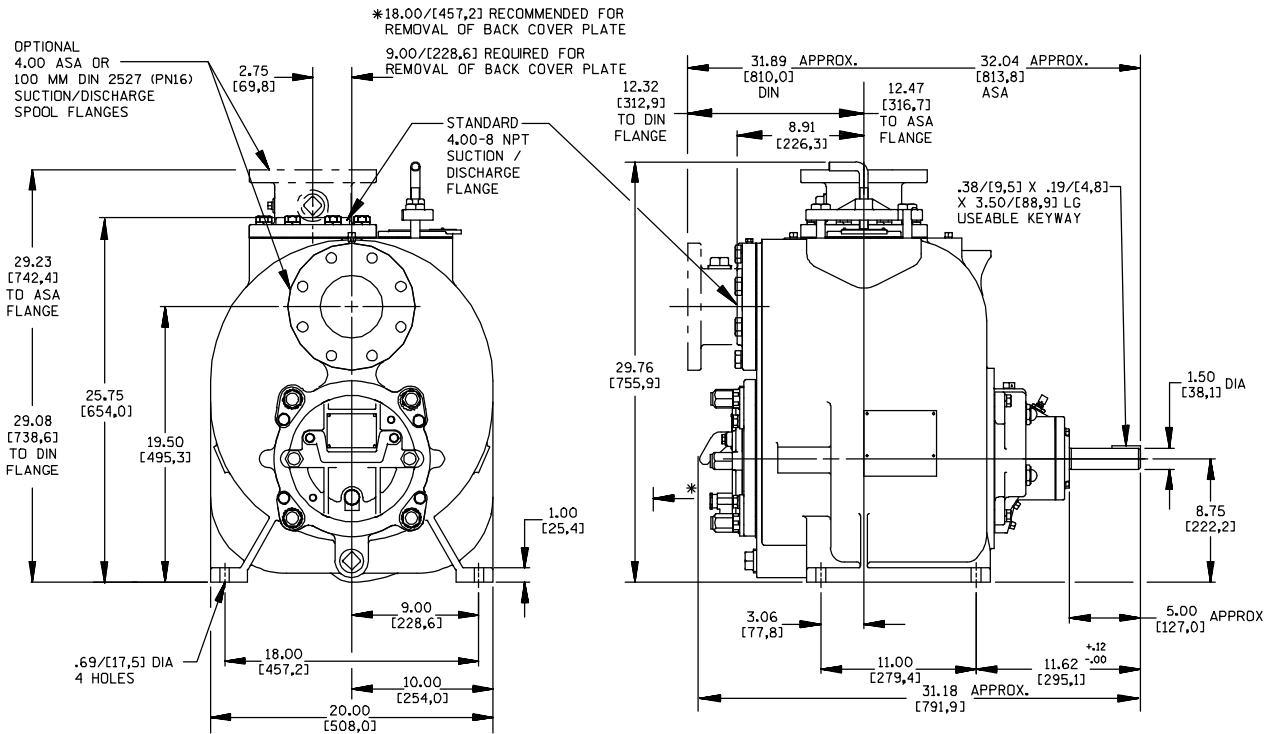
Printed in U.S.A.

**Specification Data**

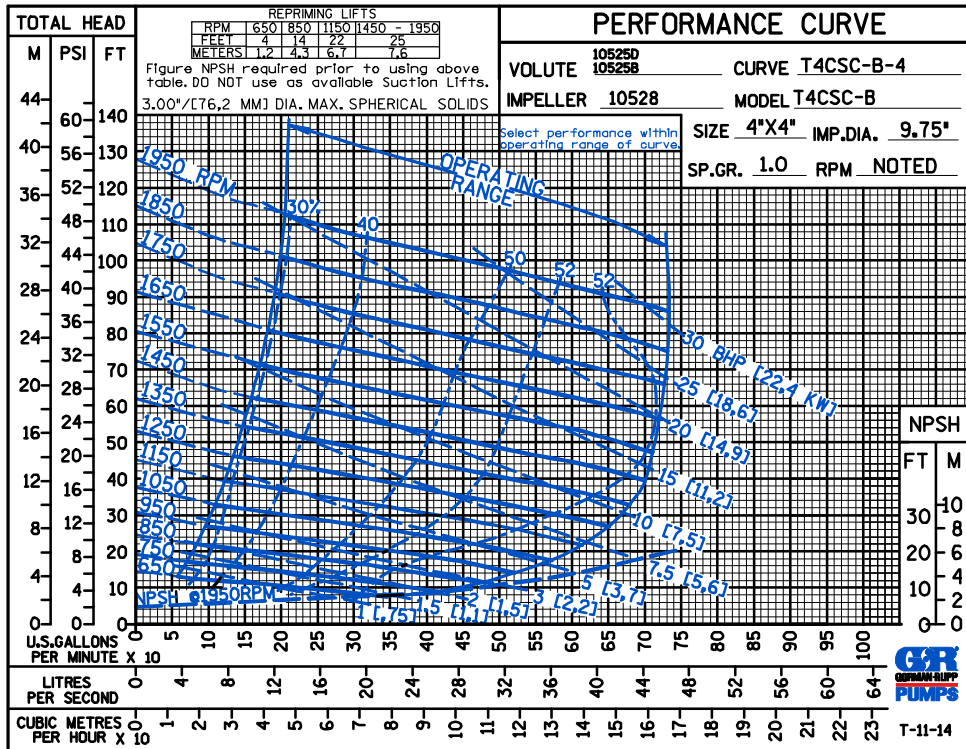
SECTION 55, PAGE 2190

**APPROXIMATE DIMENSIONS and WEIGHTS**

**NET WEIGHT:** 635 LBS. (288 KG.)\*  
**SHIPPING WEIGHT:** 665 LBS. (302 KG.)\*  
**EXPORT CRATE:** 22.7 CU. FT. (0,64 CU. M.)  
**\*ADD 15 LBS. (6,8 KG.) W/EACH SPOOL FLANGE**



**OPTIONAL ASA OR DIN STANDARD SUCTION & DISCHARGE SPOOL FLANGES AVAILABLE**



**GORMAN-RUPP PUMPS**

www.grpumps.com

Specifications Subject to Change Without Notice

Printed in U.S.A.