

YZ



RAMPARTS® Series Air Driven Diaphragm Pump

Model 20P

Size 2" x 2"

PUMP SPECIFICATIONS

Size: 2" x 2" (51 mm x 51 mm) - ASA 125# Flanges. Handles up to 1" (25,4 mm) Diameter Spherical Solids (Limited by Check Valve).

Pump Castings: Ductile Iron; 316 SST; Unlined or Lined.

Optional Linings*: Chlorosulfonated Polyethylene (Hypalon® or Equivalent); Chloroprene (Neoprene® or Equivalent); Ethylene Propylene Diene Monomer (Nordel® or Equivalent); Fluorocarbon (Viton® or Equivalent) Nitrile (Buna-N).

Diaphragm/Gaskets*: Available In The Same Materials As Shown Above For Pump Casting Linings, As Well As Dura-XL (TPE w/an Olefinic Base) or Dura-S (TPE w/a Polyamide [Nylon® or Equivalent] Base).

Air Cylinder: Steel Casing; Ductile Iron Piston; Glass-Filled Fluoro Plastic (Teflon® or Equivalent) Piston Seals; Chrome Plated Shaft and Tube; Polyamide (Duralon® or Equivalent) Rod Bearing; Pressure-Activated Polyurethane Shaft Seal; Stroke Indicator Rod.

Check Valves: Ball Type, 90° Quick Opening, Unlined or Lined With The Same Materials As Shown Above For Pump Castings.

Check Valve Balls: Available In The Same Materials As Shown Above For Pump Casting Linings, As Well As Fluoro Plastic (Teflon® or Equivalent) and Urethane.

Check Valve Seats: Available In The Same Materials As Shown Above For Diaphragms and Gaskets, As Well As Urethane, Steel or 316 Stainless Steel.

* Other Materials Available Upon Request.

Duralon, Hypalon, Neoprene, Nordel, Nylon, Teflon and Viton are Registered Trademarks of the DuPont Corp.



RECOMMENDED PERFORMANCE RANGE

0-30 Strokes per Minute.

0-37 GPM (0,0-2,3 Liters per Second).

20-150 Feet (6,1-45,7 Meters) Discharge Head.

Maximum Suction Lift 20 Feet (6,1 Meters).

Consult The Performance Curve For Performance Maximums.

PUMP OPTIONS

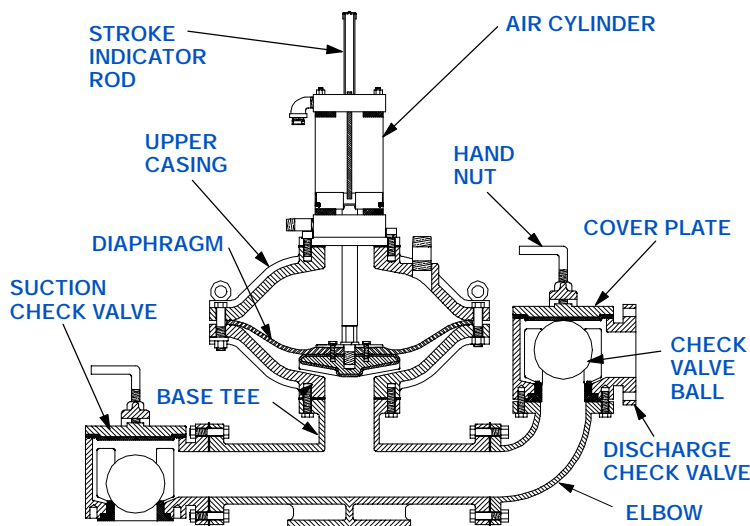
Pulsation Stabilizers or Air Chambers; Stabilizer/Chamber Mounting Tees; Suction Elbow; Pump Stands with or Without Casters; Diaphragm Failure Detection; Flap Check Valves (Up to 1" [25,4 mm] solids).

CONTROL OPTIONS**

Control Panels: Nema 4X Fiberglass Enclosure; Dual Pressure Adjustments; Solid State/Digital; 115 Volt. Consult the Factory for Available Control Panels.

Air Controls: External to Pump; Easily Serviced; Replaceable Filter and Muffler Element.

** Pump Warranty Void If Not Operated With Gorman-Rupp or Gorman-Rupp-Approved Control.



THE GORMAN-RUPP COMPANY • MANSFIELD, OHIO

www.gormanrupp.com

GORMAN-RUPP OF CANADA LIMITED • ST. THOMAS, ONTARIO, CANADA

Specifications Subject to Change Without Notice

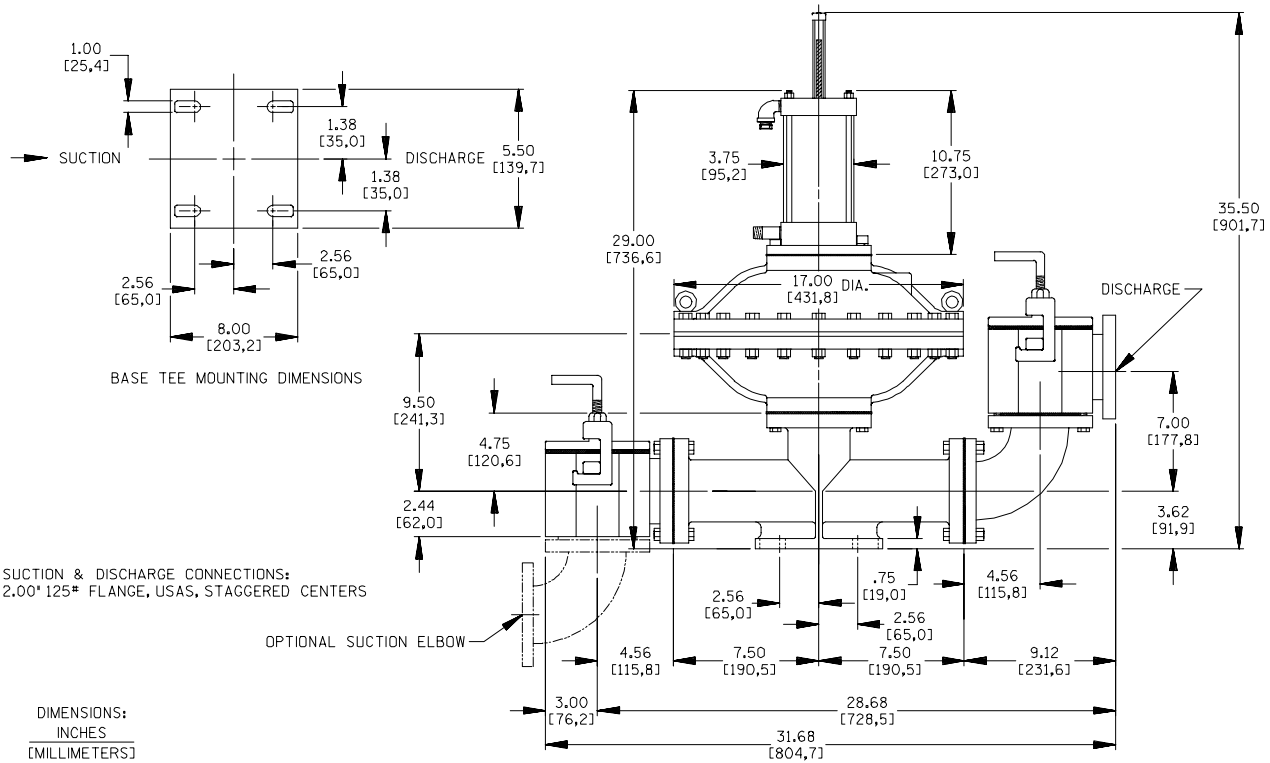
Printed in U.S.A.

Specification Data

APPROXIMATE
DIMENSIONS and WEIGHTS

NET WEIGHT: 310 LBS. (141 KG.)
SHIPPING WEIGHT: 400 LBS. (181 KG.)
EXPORT CRATE: 11.3 CU. FT. (0,32 CU. M.)

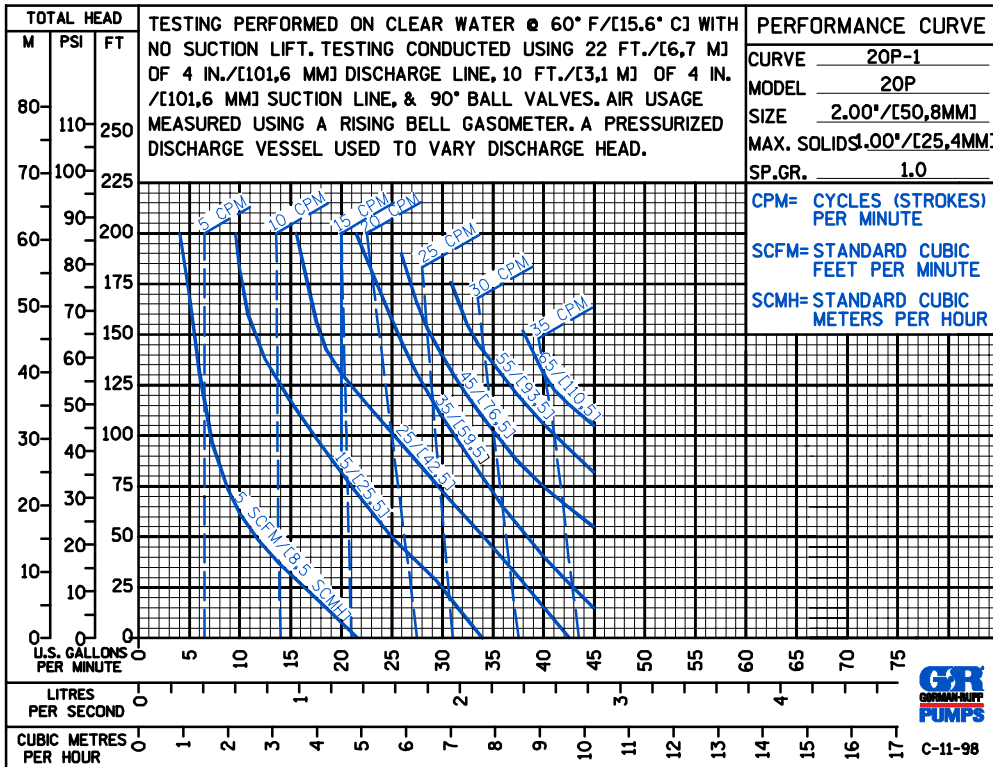
SECTION 120, PAGE 1100



SUCTION & DISCHARGE CONNECTIONS:
2.00" 125# FLANGE, USAS, STAGGERED CENTERS

OPTIONAL SUCTION ELBOW

DIMENSIONS:
INCHES
[MILLIMETERS]



THE GORMAN-RUPP COMPANY • MANSFIELD, OHIO

GORMAN-RUPP OF CANADA LIMITED • ST. THOMAS, ONTARIO, CANADA

Specifications Subject to Change Without Notice

Printed in U.S.A.