

YZ



# RAMPARTS® Series Air Driven Diaphragm Pump

## Model 15P

### Size 1-1/2" x 1-1/2"

#### PUMP SPECIFICATIONS

**Size:** 1-1/2" x 1-1/2" (38 mm x 38 mm) - ASA 125# Flanges. Handles up to 1" (25,4 mm) Diameter Spherical Solids (Limited by Check Valve).

**Pump Castings:** Ductile Iron; Unlined or Lined.

**Optional Linings\*:** Chlorosulfonated Polyethylene (Hypalon® or Equivalent); Chloroprene (Neoprene® or Equivalent); Ethylene Propylene Diene Manomer (Nordel® or Equivalent); Fluorocarbon (Viton® or Equivalent) Nitrile (Buna-N).

**Diaphragm/Gaskets\*:** Available In The Same Materials As Shown Above For Pump Casting Linings, As Well As Dura-XL (TPE w/an Olefinic Base) or Dura-S (TPE w/a Polyamide [Nylon® or Equivalent] Base).

**Air Cylinder:** Steel Casing; Ductile Iron Piston; Glass-Filled Fluoro Plastic (Teflon® or Equivalent) Piston Seals; Chrome Plated Shaft and Tube; Polyamide (Duralon® or Equivalent) Rod Bearing; Pressure-Activated Polyurethane Shaft Seal; Stroke Indicator Rod.

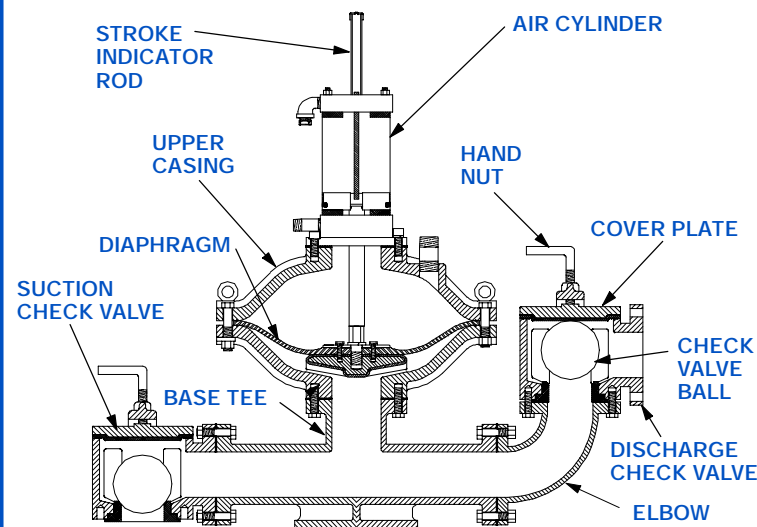
**Check Valves:** Ball Type, 90° Quick Opening, Unlined or Lined With The Same Materials As Shown Above For Pump Castings.

**Check Valve Balls:** Available In The Same Materials As Shown Above For Pump Casting Linings, As Well As Fluoro Plastic (Teflon® or Equivalent) and Urethane.

**Check Valve Seats:** Available In The Same Materials As Shown Above For Diaphragms and Gaskets, As Well As Urethane, Steel or 316 Stainless Steel.

\* Other Materials Available Upon Request.

Duralon, Hypalon, Neoprene, Nordel, Nylon, Teflon and Viton are Registered Trademarks of the DuPont Corp.



#### RECOMMENDED PERFORMANCE RANGE

0-30 Strokes per Minute.  
0-15 GPM (0,0-0,95 Liters per Second).  
20-150 Feet (6,1-45,7 Meters) Discharge Head.  
Maximum Suction Lift 20 Feet (6,1 Meters).

**Consult The Performance Curve For Performance Maximums.**

#### PUMP OPTIONS

Pulsation Stabilizers or Air Chambers; Stabilizer/Chamber Mounting Tees; Suction Elbow; Pump Stands with or Without Casters; Diaphragm Failure Detection.

#### CONTROL OPTIONS\*\*

**Control Panels:** Nema 4X Fiberglass Enclosure; Dual Pressure Adjustments; Solid State/Digital; 115 Volt. Consult the Factory for Available Control Panels.

**Air Controls:** External to Pump; Easily Serviced; Replaceable Filter and Muffler Element.

\*\* Pump Warranty Void If Not Operated With Gorman-Rupp or Gorman-Rupp-Approved Control.



THE GORMAN-RUPP COMPANY • MANSFIELD, OHIO

www.gormanrupp.com

GORMAN-RUPP OF CANADA LIMITED • ST. THOMAS, ONTARIO, CANADA

Specifications Subject to Change Without Notice

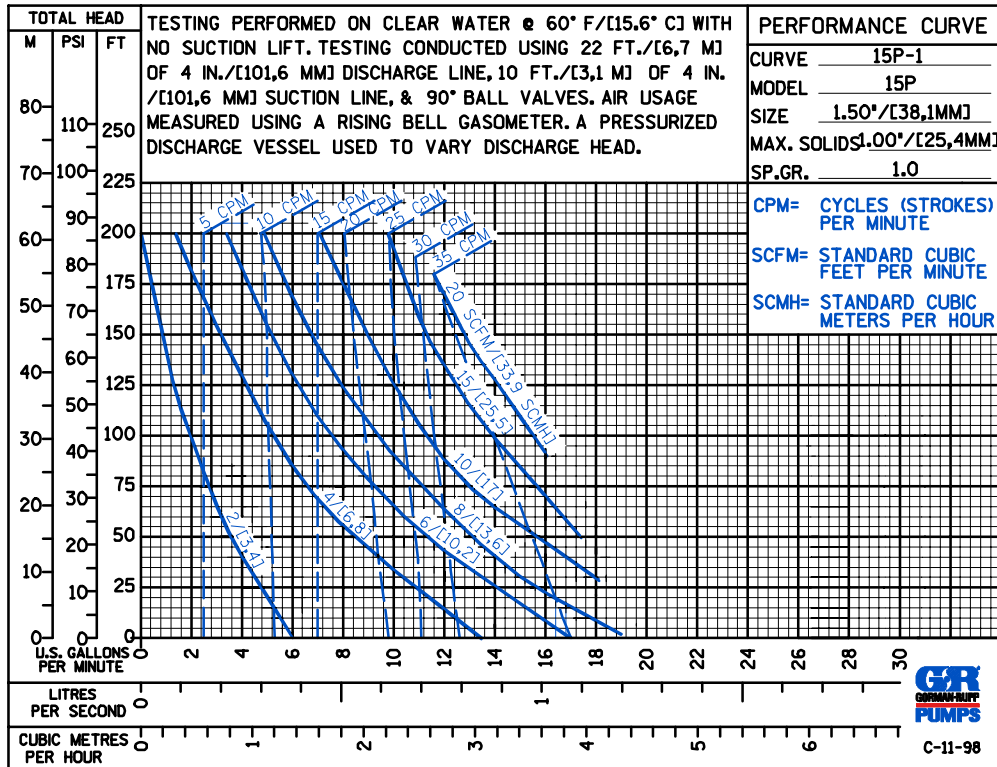
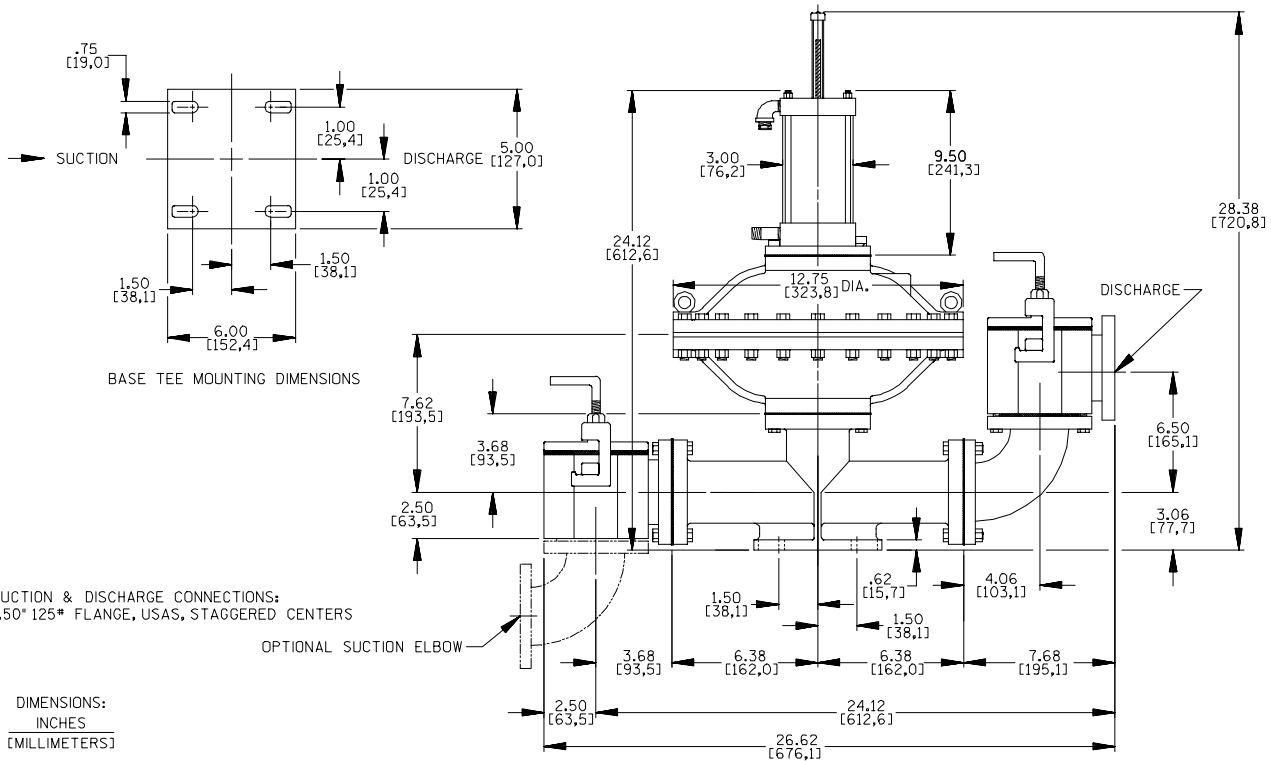
Printed in U.S.A.

**Specification Data**

APPROXIMATE  
DIMENSIONS and WEIGHTS

NET WEIGHT: 185 LBS. (84 KG.)  
SHIPPING WEIGHT: 250 LBS. (113 KG.)  
EXPORT CRATE: 5.9 CU. FT. (0,17 CU. M.)

SECTION 120, PAGE 1000



THE GORMAN-RUPP COMPANY • MANSFIELD, OHIO

GORMAN-RUPP OF CANADA LIMITED • ST. THOMAS, ONTARIO, CANADA

Specifications Subject to Change Without Notice

Printed in U.S.A.