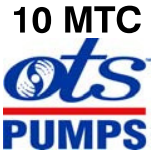




# Self Priming Centrifugal Pump

Models 12D-1B20 and 12D1-1B20

Size 2" x 2"



Total Head		Capacity Of Pump In U.S. Gallons Per Minute (GPM) At Continuous Performance				
P.S.I.	Feet					
46.0	106	42	42	42	42	42
43.4	100	61	61	61	61	61
39.0	90	84	94	94	94	94
34.7	80	88	118	125	125	125
30.3	70	91	123	138	148	148
26.0	60	92	125	141	163	166
21.7	50	93	126	144	169	178
17.3	40	94	127	147	174	188
13.0	30	95	128	150	178	198
<b>Suction Lift</b>		<b>25'</b>	<b>20'</b>	<b>15'</b>	<b>10'</b>	<b>5'</b>



**PUMP SPECIFICATIONS**

- Size:** 2" x 2" (51 mm x 51 mm) NPT - Female.
- Casing:** Aluminum Alloy 356-T6 w/Gray Iron 30 Cutwater Insert. Maximum Operating Pressure 76 psi (524 kPa).\*
- Semi-Open Type, Two Vane Impeller:** Ductile Iron 65-45-12. Handles 1 3/16" (30,2 mm) Diameter Spherical Solids.
- Replaceable Wear Plate:** Carbon Steel ASTM A36.
- Removable Cover Plate:** Aluminum Alloy 356-T6; 4 lbs. (1,8 kg).
- Intermediate Bracket:** Gray Iron 30.
- Seal:**

(12D) Double, Grease-Lubricated w/Spring-Loaded Grease Cup. Sintered Bronze Stationary Seal Seats. Steel Rotating Faces. Neoprene Packing Rings. Maximum Temperature of Liquid Pumped, 110°F (43°C).

Maximum Suction Pressure 10 psi (69 kPa).\*

(12D1) Type 31, Mechanical, Self-Lubricated. Silicon Carbide Rotating and Stationary Faces. Fluorocarbon Elastomers (DuPont Viton® or Equivalent). Stainless Steel 316 Cage and Spring. Maximum Temperature of Liquid Pumped 160°F (71°C).\*

- Seal Liner: (12D)** Copper Alloy C26000.
- Shaft Sleeve: (12D1)** 304 Stainless Steel.
- Flap Valve:** Buna-N with Nylon Reinforcement; Gray Iron 30 and Sintered Powered Steel.
- Suction Flange:** Aluminum Alloy 356-T6.
- Gaskets:** Cork w/Nitrile Binder (NC710) and Vegetable Fiber.
- Hardware:** Standard Plated Steel.
- Roll Cage with Rubber Feet.**
- 90° Discharge Elbow.**
- Strainer.**

**Optional Equipment:** Wheel Kit w/Semi-Pneumatic Tires.

*\*Consult Factory for Applications Exceeding Maximum Pressure and/or Temperature Indicated.*

**WARNING!**

Do not use in explosive atmosphere or for pumping volatile flammable liquids.

**ENGINE SPECIFICATIONS**

- Model:** Hatz 1B20.
- EPA Tier:** Tier 4.
- Type:** Single Cylinder, Four Cycle, Air Cooled, Diesel Engine.
- Displacement:** 14.8 Cu. In. (243 cc).
- Lubrication:** Forced Circulation.
- Air Cleaner:** Dry Type.
- Fuel Tank:** 0.79 U.S. Gal. (3,0 liters).
- Full Load Operating Time:** 2.6 Hours.
- Starter:** Rope Recoil.

**Standard Equipment:** Exhaust Silencer Muffler w/Guard. 90° Exhaust Deflector. Hand Throttle and Stop Control.

**HATZ PUBLISHED PERFORMANCE:**  
Maximum Intermittent Net B.H.P.  
4.6 (3,4 kW) @ 3600 RPM



GORMAN-RUPP PUMPS

www.grpumps.com

Specifications Subject to Change Without Notice

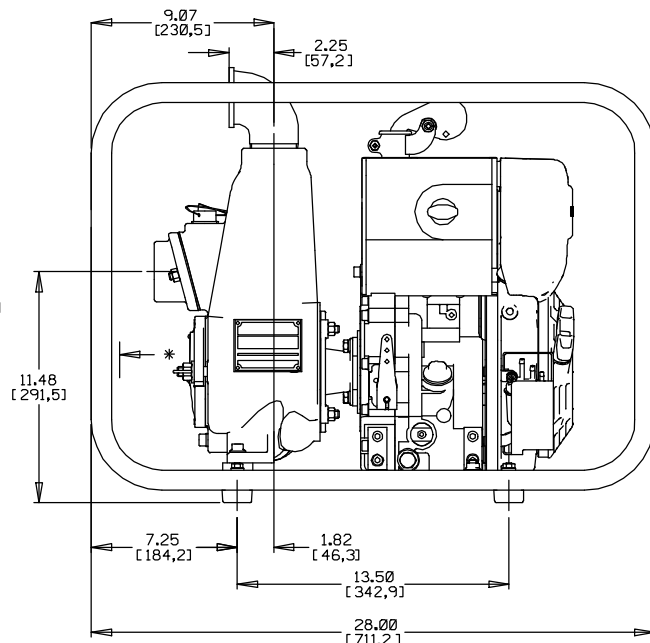
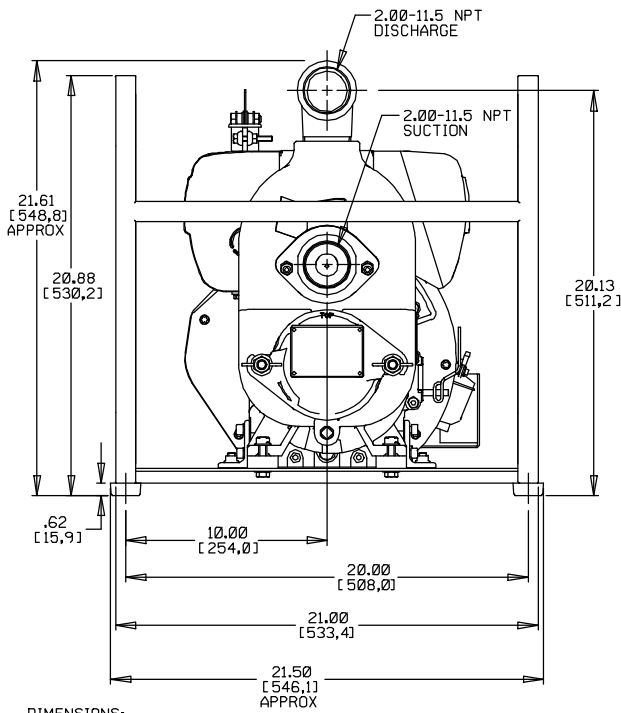
Printed in U.S.A.

**Specification Data**

SECTION 45, PAGE 540

APPROXIMATE DIMENSIONS and WEIGHTS

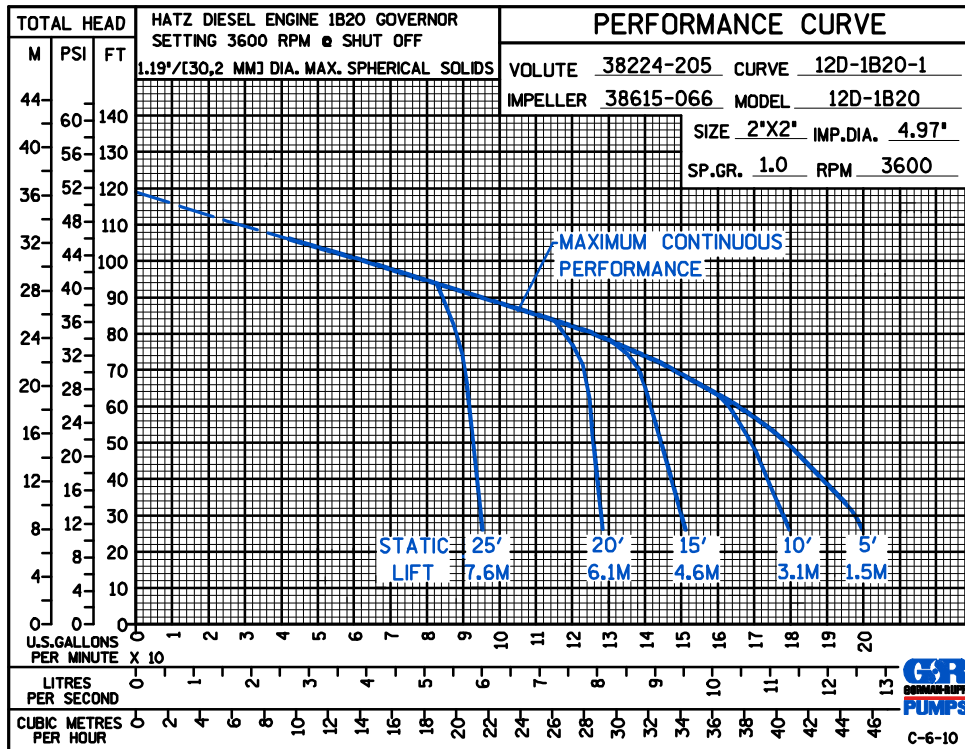
NET WEIGHT: 118 LBS. (54 KG.)  
 SHIPPING WEIGHT: 129 LBS. (59 KG.)  
 EXPORT CRATE: 5.6 CU. FT. (0,16 CU. M.)  
 WHEEL KIT (ADD): 25 LBS. (11,3 KG.);  
 SHIPPING CRATE (SEPARATE) 3 CU. FT. (0,1 CU. M.).



POWERED BY HATZ 1B20 DIESEL ENGINE

\*18.00/[457,2] RECOMMENDED FOR REMOVAL OF BACK COVER PLATE  
 5.75/[146,0] REQUIRED FOR REMOVAL OF BACK COVER PLATE

DIMENSIONS:  
 INCHES  
 [MILLIMETERS]



**GORMAN-RUPP PUMPS**

www.grpumps.com

Specifications Subject to Change Without Notice

Printed in U.S.A.