

ACDEU

# Priming Assisted Centrifugal Pump w/Autostart



## Model PA10A60-4045H

Size 10" x 10"



Total Head		Capacity of Pump in U.S. Gallons per Minute (GPM) at Continuous Performance				
P.S.I.	Feet					
60.7	140	780	780	780	780	780
52.0	120	1590	1840	1920	1920	1920
43.4	100	1840	2400	2820	3020	3020
34.7	80	1920	2520	3020	3500	3620
26.0	60	2020	2580	3100	3630	3820
17.3	40	2100	2640	3180	3720	3920
8.7	20	2180	2700	3260	3820	4030
<b>Suction Lift</b>		<b>24'</b>	<b>20'</b>	<b>15'</b>	<b>10'</b>	<b>5'</b>

### PUMP SPECIFICATIONS

**Size:** 10" x 10" (254 mm x 254 mm) Flanged.  
**Casing:** Gray Iron 30.  
 Maximum Operating Pressure 98 psi (676 kPa).  
**Semi-Open Type, Two Vane Impeller:** Ductile Iron 65-45-12.  
 Handles 3.25" (82.6 mm) Diameter Spherical Solids.  
**Suction Spool:** Gray Iron 30.  
**Impeller Shaft:** Stainless Steel 17-4 PH.  
**Externally Adjustable Front Wear Ring:** Ductile Iron 80-55-06.  
**Intermediate:** Gray Iron 30.  
**Seal Plate:** Gray Iron 30.  
**Seal:** Mechanical, Oil-Lubricated, Double Floating, Self-Aligning. Silicon Carbide Rotating and Stationary Faces. Stainless Steel 316 Stationary Seat. Fluorocarbon Elastomers (DuPont Viton® or Equivalent). Stainless Steel 316 Cage and Spring. Maximum Temperature of Liquid Pumped, 160°F (71°C).  
**Priming Chamber:** Gray Iron 30 Housing w/Stainless Steel Float and Linkage.  
**Discharge Check Valve:** Ductile Iron Housing w/Buna-N Flapper.  
**Radial Bearing:** Open Single Ball.  
**Thrust Bearing:** Open Double Ball.  
**Bearing and Seal Cavity Lubrication:** SAE 30 Non-Detergent Oil.  
**Gaskets:** Resistant Synthetic Rubber, PTFE, Cork, Vegetable Fiber, and Compressed Synthetic Fibers.  
**O-Rings:** Buna-N.  
**Hardware:** Standard Plated Steel.  
**Bearing and Seal Cavity Oil Level Sight Gauges.**  
*\*Consult Factory for Applications Exceeding Maximum Pressure and/or Temperature Indicated.*  
**Standard Equipment:** Gear-Driven Air Compressor. Hoisting Bail. Combination Skid Base w/Fuel Tank. Strainer. Single Ball Type Float Switch.  
**\*\***  
**Optional Equipment:** Battery. Heated. G-R Hard Iron Impeller. NPT Threaded Flanges. High Speed (55 MPH/89 KM/H) Tandem Axle Pneumatic-Tired Wheel Kit w/wo DOT-Approved Lights and Electric Brakes. Over-the-Road Trailer (Meets DOT and Transport Canada Requirements) Available w/Either Electric or Hydraulic Surge Brakes, Running Lights, Trailer Jack Stands and Safety Chains/Cables. Heated Priming Chamber Kit. Suction Vacuum and Discharge Pressure Gauge Kit. EPS w/Submersible Transducer Liquid Level Sensor.\*\*  
*\*\*50 Ft. (15 m) Standard Length; Dual Switches and Alternate Cable Lengths Available From the Factory.*



**WARNING!**  
 Do not use in explosive atmosphere or for pumping volatile flammable liquids.

### ENGINE SPECIFICATIONS

**Model:** John Deere 4045H "Power Tech".  
**Type:** Four Cylinder, Turbocharged, Charge Air Cooled, Enclosed, Liquid Cooled Diesel Engine.  
**Displacement:** 275 Cu. In. (4,5 liters).  
**Governor:** Electronic Isochronous.  
**Lubrication:** Forced Circulation.  
**Air Cleaner:** Dry Type.  
**Oil Reservoir:** 15.5 U.S. Qts. (14,7 liters) Dry; 14.5 U.S. Qts. (13,7 liters) Refill.  
**Fuel Tank:** 110 U.S. Gals. (416 liters).  
**Full Load Operating Time:** 17.8 Hrs.  
**Starter:** 12V Electric.  
**Standard Features:** Low Oil Pressure and High Coolant Temperature Safety Shut Down Switches. Autostart Instrument Panel Includes: Tachometer, Voltmeter, Hourmeter, Coolant Temperature Gauge, Oil Pressure Gauge, Manual/Stop/Auto Key Switch, 10 Amp Pushbutton Circuit Breaker, Startup Warning Delay. Muffler w/Weather Cap. Throttle Control.  
**JOHN DEERE PUBLISHED PERFORMANCE:**  
 Maximum Gross BHP (Intermittent Duty)  
 140 (104 kW) @ 2400 RPM



THE GORMAN-RUPP COMPANY • MANSFIELD, OHIO

GORMAN-RUPP OF CANADA LIMITED • ST. THOMAS, ONTARIO, CANADA

www.grpumps.com

Specifications Subject to Change Without Notice

Printed in U.S.A.

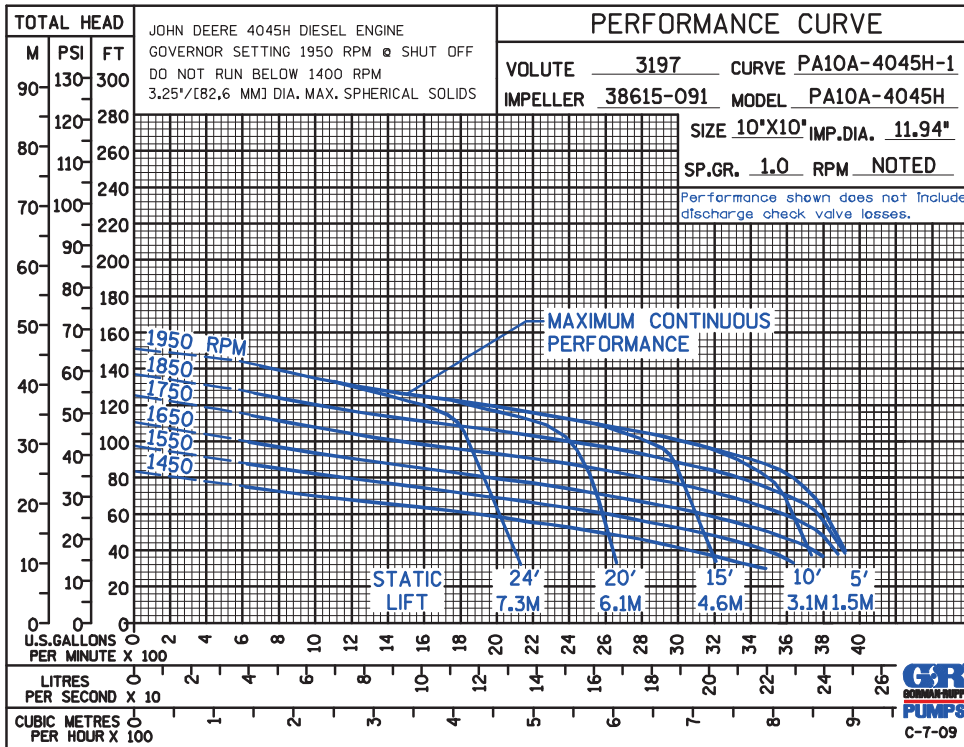
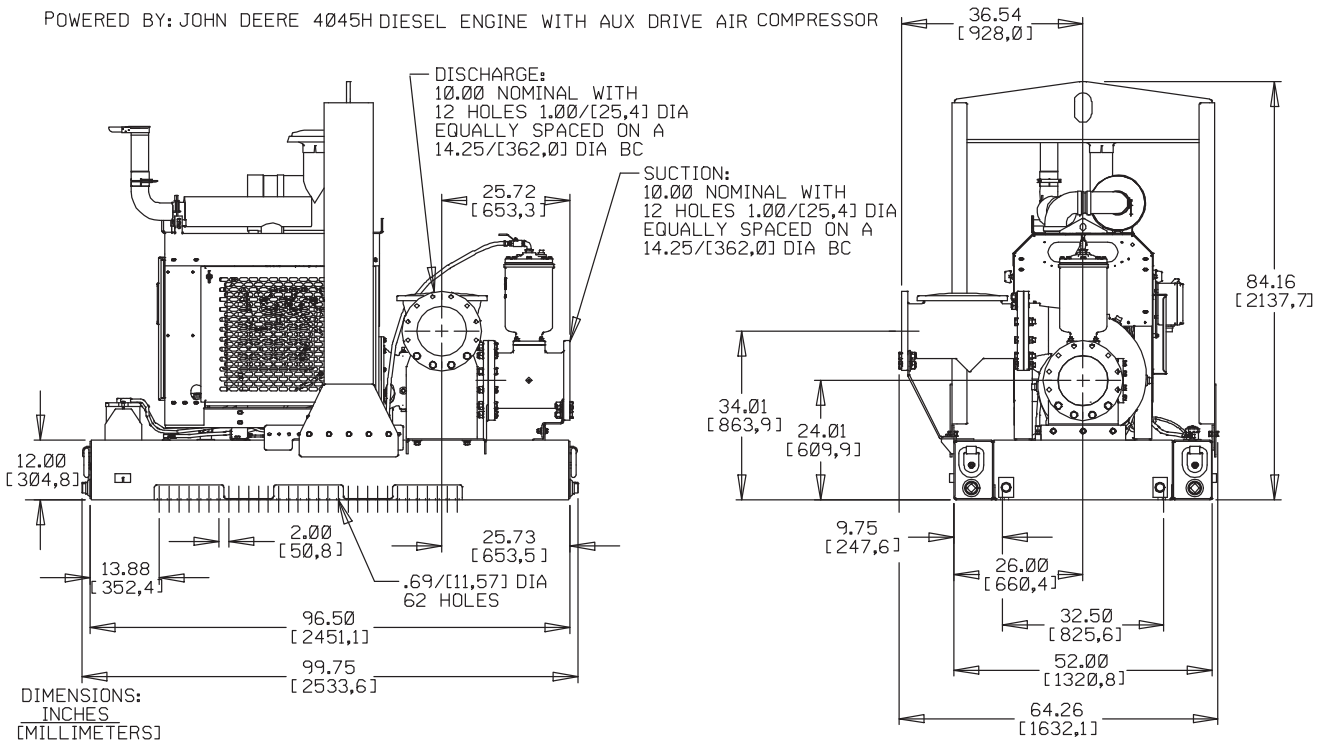
**Specification Data**

SECTION 42, PAGE 1495

APPROXIMATE DIMENSIONS and WEIGHTS

	<b>SKID BASE</b>	<b>4-WHEEL</b>
<b>NET WEIGHT:</b>	4350 LBS. (1973 KG.)	4975 LBS. (2257 KG.)
<b>SHIPPING WEIGHT:</b>	4550 LBS. (2063 KG.)	4975 LBS. (2257 KG.)
<b>EXPORT CRATE SIZE:</b>	340 CU. FT. (9,6 CU. M.)	560 CU. FT. (24,3 CU. M.)

POWERED BY: JOHN DEERE 4045H DIESEL ENGINE WITH AUX DRIVE AIR COMPRESSOR



THE GORMAN-RUPP COMPANY • MANSFIELD, OHIO

GORMAN-RUPP OF CANADA LIMITED • ST. THOMAS, ONTARIO, CANADA

Specifications Subject to Change Without Notice

Printed in U.S.A.