

ACDEU



# Priming Assisted Centrifugal Pump w/Autostart Model PAH4A60-6068H Size 6" x 4"



Total Head		Capacity of Pump in U.S. Gallons per Minute (GPM) at Continuous Performance			
P.S.I.	Feet				
128.3	296	400	400	N/A	N/A
121.4	280	560	560	N/A	N/A
104.0	240	1060	1280	320	320
86.7	200	1110	1370	1160	1200
69.4	160	1120	1400	1740	1880
52.0	120	1125	1415	1780	2040
34.7	80	1130	1425	1790	2060
17.3	40	1130	1430	1800	2060
<b>Suction Lift</b>		<b>25'</b>	<b>20'</b>	<b>15"‡</b>	<b>10"‡</b>

‡Suction Lift Based On 1800 RPM Engine Speed.

**PUMP SPECIFICATIONS**

**Size:** 6" x 4" (152 mm x 102 mm) Flanged.  
**Casing:** Ductile Iron 65-45-12.  
 Maximum Operating Pressure 200 psi (1379 kPa).\*  
**Enclosed Type, Five Vane Impeller:** Ductile Iron 65-45-12.  
 Handles 3" (76,2 mm) Diameter Spherical Solids.  
**Suction Head:** Gray Iron 30.  
**Suction Spool:** Gray Iron 30.  
**Impeller Shaft:** Alloy Steel 41L40.  
**Replaceable Wear Ring:** Ductile Iron 65-45-12.  
**Bearing Pedestal:** Gray Iron 30.  
**Seal Plate:** Gray Iron 30.  
**Seal:** Mechanical, Oil-Lubricated, Double Floating, Self-Aligning. Silicon Carbide Rotating Face and Stationary Seat. Fluorocarbon Elastomers (DuPont Viton® or Equivalent). Stainless Steel 316 Cage and Spring. Maximum Temperature of Liquid Pumped 160°F (71°C).\*  
**Shaft Sleeve:** Stainless Steel 303/304.  
**Priming Chamber:** Gray Iron 30 Housing w/Stainless Steel Float and Linkage.  
**Discharge Check Valve:** Ductile Iron Housing w/Buna-N Flapper.  
**Radial Bearing:** Open Roller.  
**Thrust Bearing:** Open Double Ball.  
**Bearing and Seal Cavity Lubrication:** SAE 30 Non-Detergent Oil.  
**Gaskets:** Vegetable Fiber.  
**O-Rings:** Buna-N.  
**Hardware:** Standard Plated Steel.  
**Bearing and Seal Cavity Oil Level Sight Gauges.**  
 \*Consult Factory for Applications Exceeding Maximum Pressure and/or Temperature Indicated.  
**Standard Equipment:** Gear-Driven Air Compressor. Hoisting Bail. Combination Skid Base w/Fuel Tank. Strainer. Single Ball Type Float Switch.\*\*  
**Optional Equipment:** Battery. Heated Priming Chamber Kit. Suction Vacuum and Discharge Pressure Gauge Kit. High Speed (55 MPH/89 KM/H) Tandem Axle Pneumatic-Tired Wheel Kit w/wo DOT-Approved Lights and Electric Brakes. Tandem Axle Over-the-Road Trailer (Meets DOT Requirements) Available w/Either Electric or Hydraulic Surge Brakes, Running Lights, Jack Stands and Safety Chain/Cables. EPS w/Submersible Transducer Liquid Level Sensor (50 Ft. [15M] Cable Standard, Alternate Lengths Available).  
 \*\*50 Ft. (15 m) Standard Length; Dual Switches and Alternate Cable Lengths Available From the Factory.



**WARNING!**  
Do not use in explosive atmosphere or for pumping volatile flammable liquids.

**ENGINE SPECIFICATIONS**

**Model:** John Deere 6068H "Power Tech."  
**Type:** Six Cylinder, Four Cycle, Turbocharged, Charge Air Cooled, Enclosed, Liquid Cooled Diesel Engine.  
**Displacement:** 415 Cu. In. (6,8 liters).  
**Governor:** Electronic.  
**Lubrication:** Forced Circulation.  
**Air Cleaner:** Dry Type.  
**Fuel Tank:** 133 U.S. Gals. (503 liters).  
**Full Load Operating Time:** 14.5 Hrs.  
**Starter:** 12V Electric.  
**Standard Features:** Low Oil Pressure, High Coolant Temperature and Start Failure Safety Shut Down Switches/Indicators. Fuel Level Sensor. Throttle Control. Autostart Instrument Panel Includes: Tachometer, Voltmeter, Hourmeter, Coolant Temperature and Oil Pressure Indicators, Manual/Stop/Auto Key Switch, 10 Amp Fuse, Audible Startup Warning Delay. Muffler w/Weather Cap.

**JOHN DEERE PUBLISHED PERFORMANCE:**  
 Maximum Gross BHP (Intermittent)  
 225 (168 kW) @ 2200 RPM



THE GORMAN-RUPP COMPANY • MANSFIELD, OHIO

GORMAN-RUPP OF CANADA LIMITED • ST. THOMAS, ONTARIO, CANADA

www.grpumps.com

Specifications Subject to Change Without Notice

Printed in U.S.A.

**Specification Data**

SECTION 43, PAGE 230

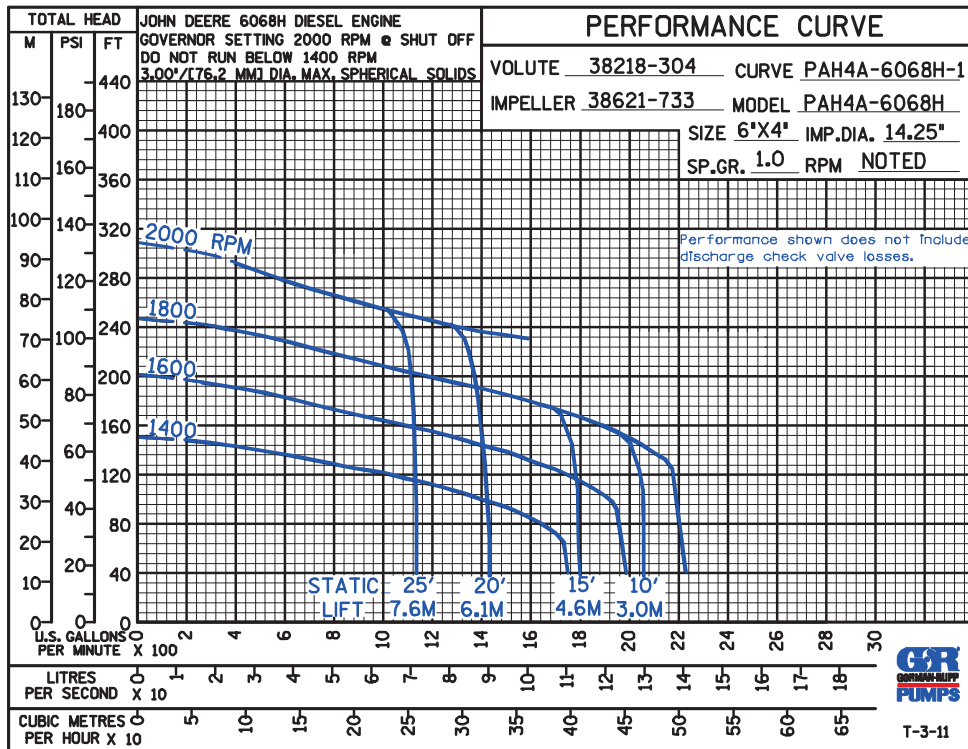
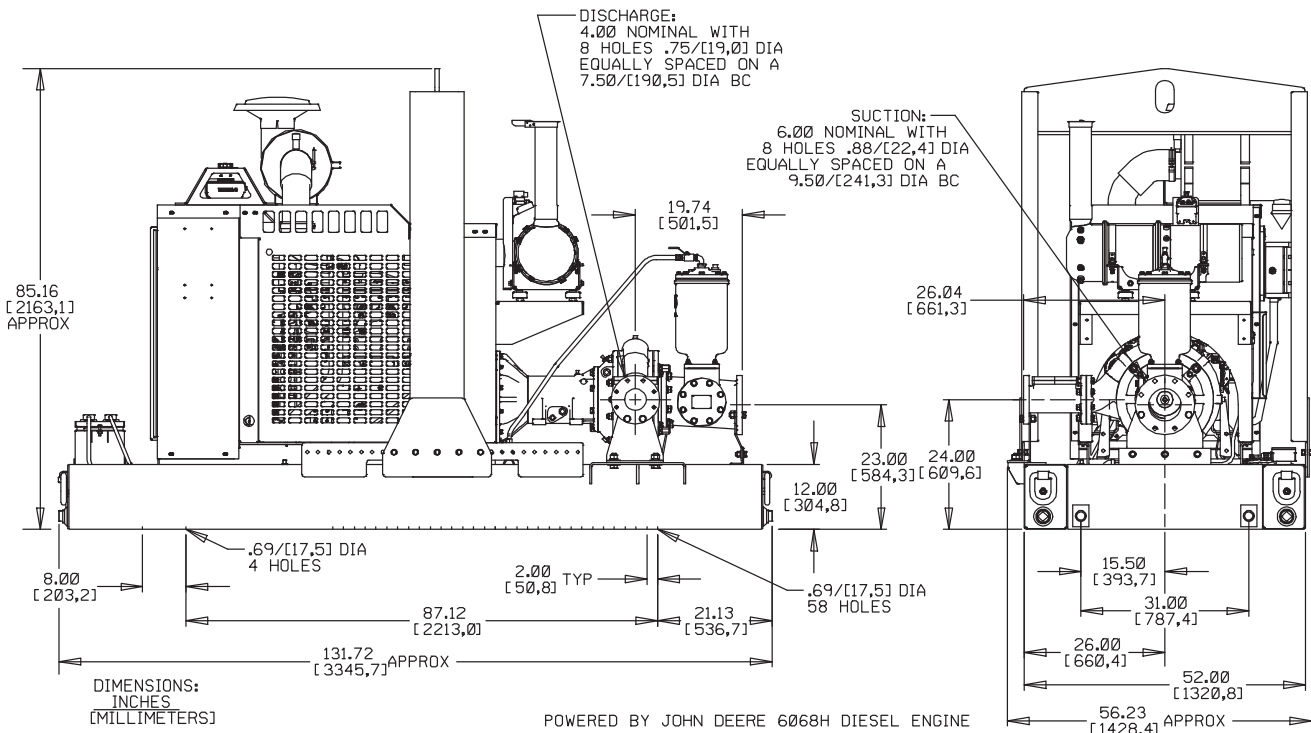
APPROXIMATE DIMENSIONS and WEIGHTS

**NET WEIGHT:** 5890 LBS. (2671 KG.)  
**SHIPPING WEIGHT:** 6100 LBS. (2767 KG.)  
**EXPORT CRATE SIZE:** 452 CU. FT. (13 CU. M.)

**SKID BASE**

**WHEEL KIT**

6300 LBS. (2857 KG.)  
 6300 LBS. (2857 KG.)



THE GORMAN-RUPP COMPANY • MANSFIELD, OHIO

GORMAN-RUPP OF CANADA LIMITED • ST. THOMAS, ONTARIO, CANADA

Specifications Subject to Change Without Notice

Printed in U.S.A.