

ACDEU

**Priming Assisted Centrifugal Pump
w/Autostart**



Model PAH6B60-6068H IT4

Size 10" x 6"



Total Head		Capacity of Pump in U.S. Gallons per Minute (GPM) at Continuous Performance			
P.S.I.	Feet				
107.5	248	350	350	350	350
97.5	225	1200	1200	1200	1200
86.7	200	1600	2000	2000	2000
75.9	175	1630	2640	2750	2750
65.0	150	1620	2700	3275	3320
54.2	125	1620	2700	3450	3790
43.4	100	1610	2700	3520	4050
Suction Lift		25'	20'	15'	10'



PUMP SPECIFICATIONS

Size: 10" x 6" (254 mm x 152 mm) Flanged.
Casing: Ductile Iron 65-45-12.
 Maximum Operating Pressure 164 psi (1131 kPa).*
Enclosed Type, Two Vane Impeller: Ductile Iron 65-45-12.
 Handles 3" (76,2 mm) Diameter Spherical Solids.
Suction Head: Gray Iron 30.
Suction Spool: Gray Iron 30.
Impeller Shaft: Alloy Steel 4150M.
Replaceable Wear Ring: Ductile Iron 65-45-12.
Bearing Pedestal: Gray Iron 30.
Seal Plate: Gray Iron 30.
Seal: Mechanical, Oil-Lubricated, Silicon Carbide Rotating Face and Stationary Seat. Fluorocarbon Elastomers (DuPont Viton® or Equivalent). Stainless Steel 316 Cage and Stainless Steel 18-8 Spring. Maximum Temperature of Liquid Pumped 160° F (71° C).*
Shaft Sleeve: Stainless Steel 303/304.
Priming Chamber: Gray Iron 30 Housing w/Stainless Steel Float and Linkage.
Discharge Check Valve: Ductile Iron Housing w/Buna-N Flapper.
Radial Bearing: Open Roller.
Thrust Bearing: Open Double Ball.
Bearing and Seal Cavity Lubrication: SAE 30 Non-Detergent Oil.
Gaskets: Vegetable Fiber.
O-Rings: Buna-N.
Hardware: Standard Plated Steel.
Bearing and Seal Cavity Oil Level Sight Gauges.

*Consult Factory for Applications Exceeding Maximum Pressure and/or Temperature Indicated.

Standard Equipment: Gear-Driven Air Compressor. Strainer. Hoisting Bail. Combination Skid Base w/Fuel Tank. Single Ball Type Float Switch.**

Optional Equipment: Battery. NPT Threaded Flange Kit. Heated Priming Chamber Kit. Suction Vacuum and Discharge Pressure Gauge Kit. High Speed (55 MPH/89 KM/H) Tandem Axle Pneumatic-Tired Wheel Kit w/w/o DOT-Approved Lights and Electric Brakes. Tandem Axle Over-the-Road Trailer (Meets DOT Requirements) Available w/Either Electric or Hydraulic Surge Brakes, Running Lights, Jack Stands and Safety Chains/Cables. EPS w/Submersible Transducer Liquid Level Sensor (50 Ft. [15M] Cable Standard, Alternate Lengths Available).

**50 Ft. (15 m) Standard Length; Dual Switches and Alternate Cable Lengths Available From the Factory.

WARNING!
Do not use in explosive atmosphere or for pumping volatile flammable liquids.

ENGINE SPECIFICATIONS

Model: John Deere 6068H "Power Tech" Interim Tier 4.
Type: Six Cylinder, Four Cycle, Turbocharged, Charge Air Cooled, Enclosed, Liquid Cooled Diesel Engine.
Displacement: 415 Cu. In. (6,8 liters).
Governor: Electronic.
Lubrication: Forced Circulation.
Air Cleaner: Dry Type.
Fuel Tank: 133 U.S. Gals. (503 liters).
Full Load Operating Time: 13.7 Hrs.
Starter: 12V Electric.

Standard Features: Low Oil Pressure, High Coolant Temperature and Start Failure Safety Shut Down Switches/Indicators. Fuel Level Sensor. Throttle Control. Autostart Instrument Panel Includes: Tachometer, Voltmeter, Hourmeter, Coolant Temperature and Oil Pressure Indicators, Manual/Stop/Auto Key Switch, 10 Amp Fuse, Audible Startup Warning Delay. Emission System w/Weather Cap.

JOHN DEERE PUBLISHED PERFORMANCE:
Maximum Gross BHP (Intermittent)
250 (187 kW) @ 2200 RPM



THE GORMAN-RUPP COMPANY • MANSFIELD, OHIO

GORMAN-RUPP OF CANADA LIMITED • ST. THOMAS, ONTARIO, CANADA

www.grpumps.com

Specifications Subject to Change Without Notice

Printed in U.S.A.

Specification Data

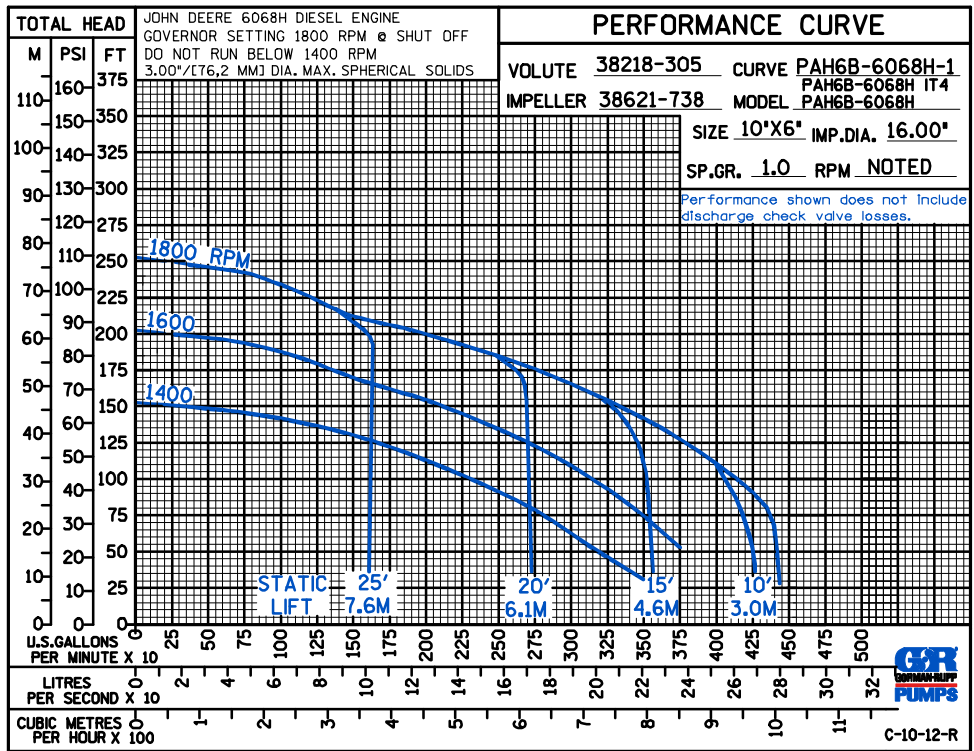
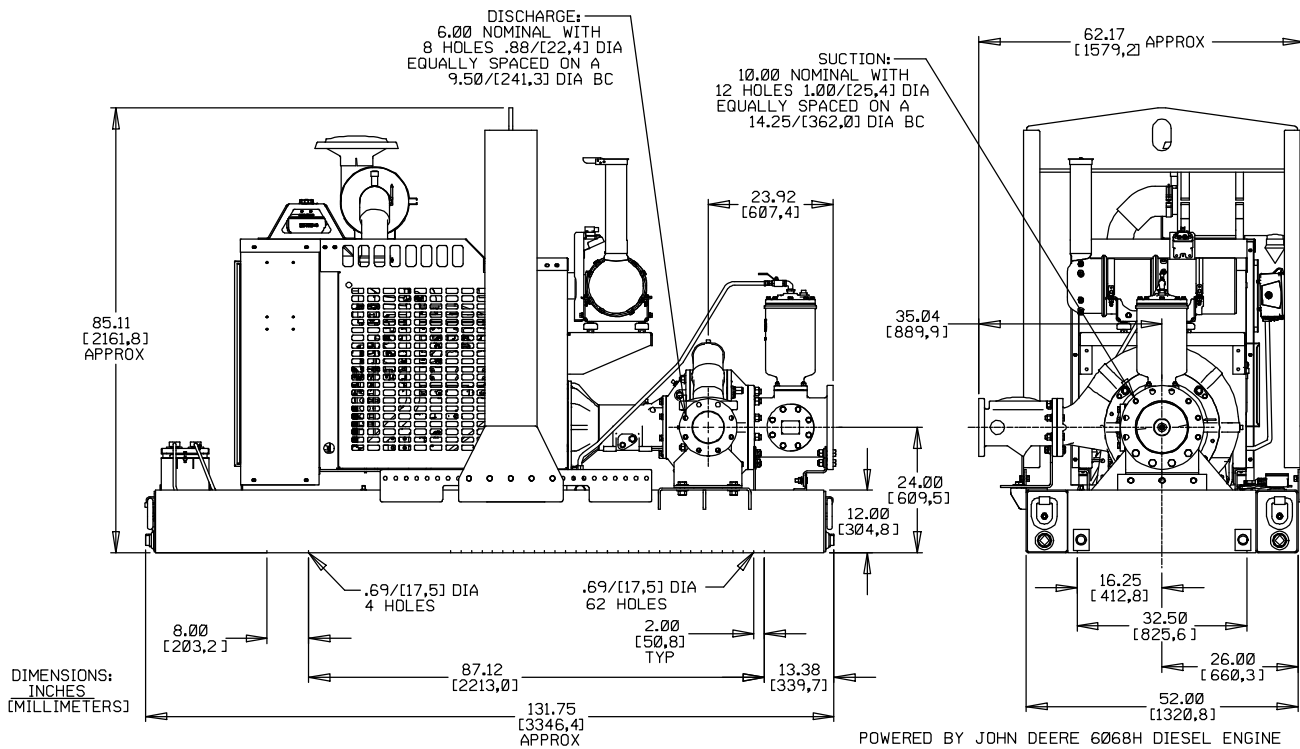
SECTION 43, PAGE 310

APPROXIMATE DIMENSIONS and WEIGHTS

NET WEIGHT:
SHIPPING WEIGHT:
EXPORT CRATE SIZE:

SKID BASE
6100 LBS (2766,9 KG)
6480 LBS (2939,3 KG)
421 CU. FT. (12 CU. M.)

WHEEL KIT
4975 LBS. (2257 KG.)
4975 LBS. (2257 KG.)
1257 CU. FT. (35,6 CU. M.)



THE GORMAN-RUPP COMPANY • MANSFIELD, OHIO

GORMAN-RUPP OF CANADA LIMITED • ST. THOMAS, ONTARIO, CANADA

Specifications Subject to Change Without Notice

Printed in U.S.A.